

PRESENTED BY
sueadler 
THE #1 KELLER WILLIAMS TEAM IN NEW JERSEY

kW PREMIER
PROPERTIES
KELLERWILLIAMS
Each Keller Williams office is
individually owned and operated.

*20 Candace Lane
Chatham Township, New Jersey*

A photograph of a well-maintained outdoor swimming pool area. The pool is rectangular with a light blue interior and a grey stone coping. It is surrounded by a light-colored stone patio. In the foreground, there is a large, dark wicker lounge sofa with beige cushions and patterned throw pillows. A black metal coffee table is in front of the sofa. To the right, a large beige patio umbrella is open. In the background, there are several lounge chairs, a brick fire pit, and a dense line of trees and shrubs. The sky is blue with some clouds.

WELCOME HOME!



Situated on a picturesque, tree-lined street in sought after Chatham Township, 20 Candace Lane is a magnificent Colonial that's truly captivating both inside and out. Every detail has been considered in this 7,800+ square foot home featuring 6/7 bedrooms, 6.2 baths and luxurious ambiance highlighted by its custom architectural features and premium finishes.





Upon arrival, an expansive brick paver driveway guides you to the impressive columned entryway. Enter through the covered front porch for your first glimpse of all this home has to offer. A grand two-story Entry Foyer with warm hued hardwood floors, handsome raised panel wainscoting, and a stately center staircase welcome you to the open, airy floor plan of well-planned living and entertaining spaces.

On the right, the elegant Living Room features an exquisite wall of custom built-in shelving, ready to display all your cherished books and collectibles. Double wood pocket doors lead to the stately Home Office, where you'll find more custom built-in cabinetry and bright Alcove/Sunroom adorned with tall windows that easily flows to the Family Room, and could also serve as a wonderful child's play room.





Off the Kitchen lies a convenient Wet Bar fully equipped with fine cabinetry, quartzite top, backsplash, a striking copper prep sink, and beverage refrigerator drawers and plenty of storage space for all your entertaining needs. Prepare a cocktail and move into the spacious Family Room to sit in front of the stunning fireplace, or enjoy the sun streaming in through the wall of windows. Slip outside through the French door to enjoy your beverage on the covered wood porch. Back inside, when the sun sets, the blinds close automatically, thanks to the top-knotch Control4 smart home system, allowing you to operate many of the home's lights, window coverings, sound/video systems with a convenient app.

The show stopping designer Kitchen is sure to inspire any cook. Featuring top-of-the-line appliances, custom cream-colored cabinetry, attractive granite countertops, a walk-in pantry with wood shelving and an ice machine, and a large center island topped with a custom butcher block for easy meal prep. Enjoy your gourmet creations in the adjacent Breakfast Room, which boasts abundant sunlight streaming in through large windows that reveal stunning hilltop views. French doors offer access to a covered back porch, the perfect spot to sit and sip your morning coffee, and enjoy the privacy of the tree-lined backyard. For more formal entertaining, step into the neighboring Dining Room. It's the epitome of elegance with custom silk wallpaper, raised panel wainscoting, tray ceiling and an exquisite crystal chandelier, and perfect place to host anything from grand holiday meals to intimate dinners with friends. The nearby formal Powder Room has been recently fully renovated to compliment the upscale ambiance of the home. A Mud Room furnished with plenty of cubbies, storage space, access to the 3-car garage, and an adjacent second powder room complete the first-level living space.





Ready to retire for the evening? Proceed up the stairway to an expansive landing with access to 5 spacious Bedrooms, each one boasting a private En-suite Bath. Immerse yourself in luxury as you enter the Primary Suite with amenities worthy of the finest 5-star hotel. Here, a spacious bedroom is highlighted by a tray ceiling with elegant up-lighting that sets a relaxing mood as you proceed into the adjacent sitting room bathed in sunlight from its fully windowed wall. Here, a built-in Miele coffee machine sits above a drink fridge, making it easy to enjoy a crisp glass of white wine before bed or start your day with a strong coffee without leaving the luxurious comfort of your own retreat.



Two large walk-in California closets, one with glass-front cabinetry and a vanity area, assure there's plenty of space for all your clothing and shoes. Enter the spa-like marble en suite bath to enjoy a relaxing soak in the free-standing tub, or if you prefer, step into the large marble shower furnished with multiple shower heads. His & Hers vanities with lots of storage guarantee your comfort and convenience on a daily basis. Family and guests will enjoy their own private retreat in three additional bedrooms - each with en suite baths and an abundance of closet space. The fourth bedroom, smartly tucked at the far end of the house, was recently transformed into a stunning Bunk Room that looks pulled from a magazine. It features gorgeous custom built-in full-size beds and is the perfect spot for an overflow of guests or sleepovers. A charming study alcove furnished with built-in desks, bookcases and storage is conveniently located outside the bedrooms as is the Laundry Room and a rear staircase conveniently leading back to the First Level.



And there's more! The true highlight of the house is the top-to-bottom, no-expense-spared, out-of-this-world, 2019 renovation of the finished Lower Level. The entire space, along with much of the upstairs, boasts the fully integrated Control4 smart home system. Think you forgot to turn off the lights? Simply open the Control4 app to turn them off, without leaving your bed. Want to turn on a movie in the media room? The app will lower the lights and set the sound and video to your preferences.







Once the lights and sounds are set, sink back into the media room's leather theater chairs, and watch the big game or the latest new release on a 115-inch screen, affixed with a top-of-the-line Sony 4k projector and sound system. Turn the volume all the way up, without worry, the professionally designed space is encased with soundproof paneling, and has sumptuous touches like raised oak wall panels and a coffered ceiling. Want a good workout? The home's 6th bedroom has been converted into a full gym, complete with a rubberized floor. Feel like a glass of wine? The custom wine cellar's decorative brick walls, dark-stained oak cabinetry, and wood-slatted ceiling will make you feel like you're in Europe while you ponder which of the 1,000 bottles of wine, each stored at their ideal temperature, you'd like to open. Feel like drinking something else? The kitchenette is just as incredible as the home's first-floor kitchen, with silver-infused travertine backsplash and high-end cabinetry with glass shelving. Pull up a chair to the bar, reach into the ice machine, and pour yourself something on the rocks.



Ready to be wowed? Make your way out through the glass doors to the enormous bluestone patio surrounded by sprawling lawns with show-stopping views of the landscape. Picture the space with multiple tables and lounge chairs and appetizing scent coming from the grill as guests hop in and out of the inviting heated salt-chlorinated pool on a warm summer day. You'll find that vacationing at home has never been more relaxing! With its generous interior spaces combined with its spectacular outdoor oasis, sought-after location with easy access to top-ranked schools, fine shopping and NYC transportation, 20 Candace Lane is one you don't want to miss!

- INSIDE & OUT -

FIRST LEVEL

- 2-story Entry Foyer featuring front-to-back views, hardwood floors, raised panel wainscoting, brass chandelier hung in recessed in custom-paneled woodwork, wood door with sidelights, transom and Palladian window above, 2 coat closets with shelving, thick crown and baseboard molding, broad doorways to Living Room, Dining Room and hallway to Family Room, access to center staircase
- Living Room featuring hardwood floors, full wall of white, painted-cherry built-in bookcase/display shelving, thick crown and baseboard molding, 3 large windows with transoms on 2 exposures, recessed lighting, built-in ceiling speakers, wood pocket doors to Study
- Study (also suitable as a Playroom) featuring hardwood floors, ceiling fan with light, thick crown and baseboard molding, custom built-in with display shelving and storage cabinets, built-in ceiling speakers, large picture window and additional window on 2 exposures, large sun room/alcove with bay of 6 windows and recessed lighting, French door to Wet Bar, wood pocket doors to Living Room, automated blinds operated by Control4 Smart Home app
- Wet Bar featuring cream-painted custom cherry-wood cabinetry with glass paned accents, quartzite counter and backsplash, copper prep sink, 2 drawer-style GE Monogram beverage fridges, recessed lighting, under-cabinet lighting, hardwood floors, thick crown and baseboard molding, open to Kitchen hallway and Family Room
- Family Room featuring hardwood floors, remote-control gas fireplace with wood mantel and marble surround, 2 sconces above fireplace, coffered ceiling, thick baseboard molding, recessed lighting, built-in ceiling speakers, 4 windows with transoms facing backyard, automated blinds operated by Control4 Smart Home app, French door to covered porch and patio, open to Breakfast Room/Kitchen
- Kitchen featuring hardwood floors, white-painted custom wood cabinetry, granite counter tops on perimeter cabinetry, subway tile backsplash, thick baseboard and crown molding, Sub Zero refrigerator/freezer with integrated cabinetry panel, Wolf stainless steel 6-burner gas range with griddle, Wolf stainless double wall electric oven with convection, Wolf microwave built-in on island, Miele dishwasher with integrated cabinetry panel, Shaws farmhouse sink with brass faucet, disposal, windows on 2 exposures over sink, built-in ceiling speakers, recessed lighting, center island with seating, thick butcher block top, 2 pendant lights, walk-in pantry closet with shelving, drawers semi flush mount light and Scotsman ice machine, doorway to Dining Room, Mud Room, back staircase, open to Breakfast Area
- Breakfast Area featuring hardwood floors, raised panel wainscoting, granite-topped base cabinets and glass fronted ceiling mounted cabinets, French door to rear deck flanked by floor-to-ceiling windows with transoms and Roman shades, chandelier, windows on 2nd exposure with Roman shades, built-in ceiling speakers, thick crown molding, access to Family Room and Kitchen
- Dining Room featuring hardwood floors with inlay border, raised panel wainscoting, coffered ceiling, Crystal chandelier, custom silk wallpaper, built-in ceiling speakers, large picture window, access to Kitchen
- Formal Powder Room featuring hardwood floors, new custom wallpaper, thick baseboard molding, new furniture-style vanity with brass faucet and mirror above, semi flush mount light fixture
- Mud Room featuring ceramic tile floor, beadboard wainscoting, separate doors to brick paver driveway and garage, 4 custom built-in cubbies, built-in broom cabinet, 2 pendant fixtures, thick crown and baseboard molding, access to Powder Room #2
- Powder Room #2 featuring ceramic tile floor, beadboard wainscoting, pedestal sink with glass shelf and mirror, light fixture above vanity, window, thick crown and baseboard molding

SECOND LEVEL

- Gallery Landing featuring hardwood floors with carpet runner, raised panel wainscoting, recessed lighting, thick crown molding
- Hallway featuring hardwood floors with carpet runner, thick crown and baseboard molding, raised panel wainscoting, linen closet with shelving, recessed lighting, 2 double storage closets with shelving, built-in study alcove with 2 desks, window, shelving and drawers, pull-down access to attic, access to rear staircase with window and pendant light
- Primary Bedroom Suite featuring hardwood floors, textured wallpaper, 2 pendant lights over nightstands, tray ceiling with up-lighting, thick crown and baseboard molding, ceiling fan with light, built-in ceiling speakers, his & hers walk-in custom California Closets with semi flush mount lighting (hers with built-in vanity with mirror and glass-front doors; his with cabinetry), 3 windows on 2 exposures, sitting room featuring bay of 6 windows, recessed lighting and custom drink bar with built-in Miele coffee maker and Perlick beverage fridge, automated blinds operated Control4 Smart Home app
- Primary Bath featuring marble tile floor, thick crown and baseboard molding, recessed lighting, his & hers painted vanity cabinets with end panels and marble countertops, vanity cabinet with matching wood-framed mirror, walk-in marble shower with glass door, built-in bench with corner shelves, recessed lighting, rain- and hand-held shower heads, freestanding Aquatic-brand jetted soaking tub with bridge faucet beneath set of 3 windows, 4th window on second exposure, water closet with marble tile flooring
- Bedroom 2 featuring hardwood floors, thick crown and baseboard molding, double-door closet with shelving, double window, ceiling fan with light, recessed light
 - En Suite bath with tile floor, shower/tub with tiled walls and decorative border accent, semi flush mount light, vanity light, vanity with marble top, framed mirror
- Bedroom 3 featuring hardwood floors, ceiling fan with light, thick crown and baseboard molding, 3 windows on 2 exposures, large walk-in closet with custom shelving, linen closet
 - En Suite Bath with tile floor, window, vanity with marble top, large mirror with 2 sconces, semi flush mount light, shower/tub with fully tiled walls and decorative border accent
- Bedroom 4 featuring hardwood floors, thick crown and baseboard molding, ceiling fan with light, large walk-in closet with custom shelving and semi flush mount lighting, double window
 - En suite bath with tile floor, large sliding glass door shower with tiled walls and decorative border, recessed lighting, vanity with marble top, framed mirror and vanity lighting fixture
- Laundry Room featuring tile floor, storage cabinets, built-in shelving and cabinetry, stainless steel utility sink, window, semi flush mount light, thick baseboard molding
- Bunk Room/Bedroom 5 featuring hardwood floors, recessed lighting, sloped ceilings, 3 windows on 2 exposures, 2 custom bunk beds (twin extra-long over full-size bed) with staircase separating, built-in staircase separating beds, 10 custom drawers under beds and in stair treads, 2 double-door closets with custom shelving, built-in desk, thick baseboard molding
 - En Suite Full bath featuring shower/tub with tile surround and decorative tile border, semi flush mount light, recessed light, wood vanity, vanity light, large storage closet

LOWER LEVEL

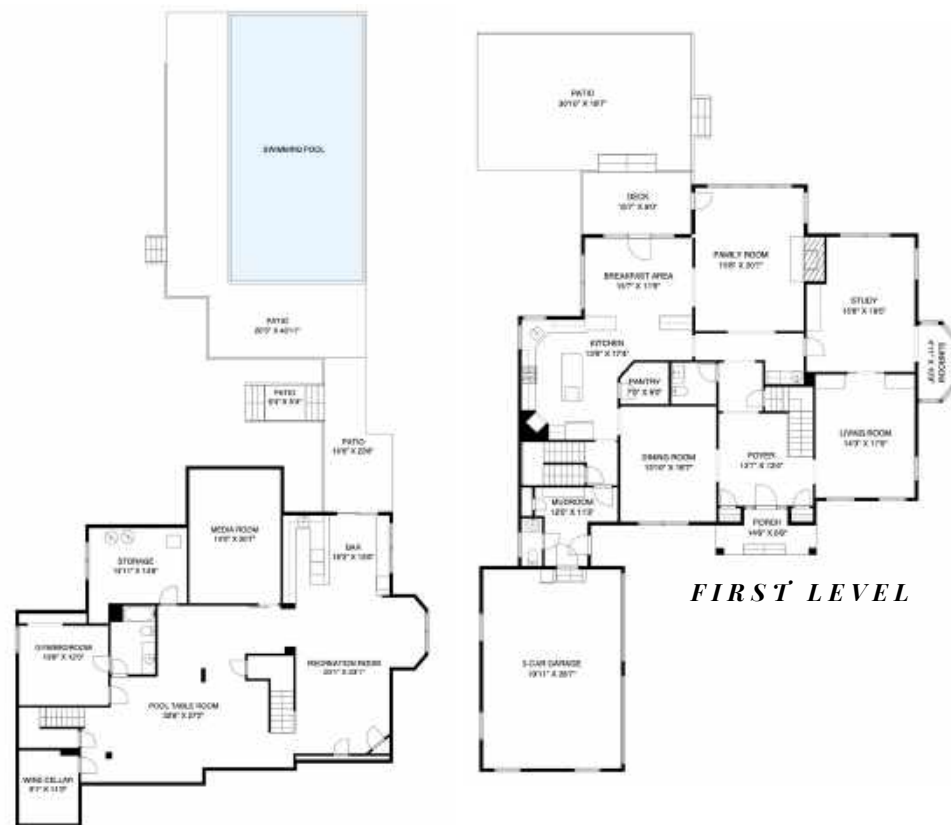
- Staircase featuring hardwood treads and risers, semi flush mount light,
- Expanded Recreation Room fully renovated (2019) featuring Control4 automated lighting, sound, video system controlled by app, custom porcelain tile flooring, built-in ceiling speakers, thick baseboard molding, 3 large storage closets, utility room, dropped ceiling

LOWER LEVEL (CONTINUED)

- Custom Kitchenette featuring full bar with glass shelving and custom cabinetry, quartz countertops with bar seating, silver-infused travertine backsplash, Summit commercial-grade beverage fridge, Scotsman ice machine, under cabinet and recessed lighting, paneled dishwasher, separate bar-style seating area with quartz countertop and beadboard wainscoting, French doors to bluestone patio and pool area, double window, dining area under double windows, wall-mounted tv
- Media Room featuring custom oak wood paneling and coffered ceiling, soundproof acoustic paneling, wall-to-wall carpeting, sconce lighting, raised panel wainscoting, 115-inch screen, 2 rows of power home-theater chairs, Sony 4K projector and sound system
- Home Gym (could be used as 6th bedroom) featuring rubber flooring, glass door, double-door closet, window, access to Full Bathroom
- Full Bathroom featuring tile flooring, wood vanity with marble top, vanity lighting, dropped ceiling, shower/tub with tile surround and recessed lighting, framed mirror, access to 6th bedroom/Home Gym
- Custom Wine Cellar featuring full climate control system, 1000 bottle capacity, decorative brick walls and floor, floor-to-ceiling stained-oak bottle racks and cabinetry, wood-slatted decorative ceiling, pendant lighting

ADDITIONAL FEATURES & UPGRADES

- 3-car Garage with electric door and heating unit
- Professionally landscaped 1.19-acre property with scenic hilltop views backing to private green Conservation Space
- Fully fenced Backyard
- Exquisite in-ground heated salt chlorinated Pool with automatic cover and vacuum system
- Underground sprinkler system throughout Front and Backyard
- Upgraded outdoor lighting, including matching outdoor fixtures, and an extensive landscaping lighting system that up-lights the house
- Covered wood Deck with access to 2-tiered bluestone Patio
- Swing King vinyl Playset
- New outdoor Wi-Fi and sound system around Pool
- Control4 home automation system with app that controls window coverings, lighting, video, and sound systems
- Belkin sound system with built-in speakers in Living Room, Family Room, Kitchen, Dining Room, Office, Primary Bedroom Suite
- SMS security system
- AprilAire humidifier
- Budd central vacuum
- 2 hot water heaters
- 5 zone forced air heat/AC system recently rezoned for maximum efficiency; 3 AC units (replaced 2022 & 2023) and 3 furnaces
- New whole-house Kohler Generator (2018) with premium maintenance package serviced semiannually
- Top-of-the-line Control 4 system throughout house with sound, video, window treatment and lighting automation controlled through app
- New Custom water softener system (2023)



LOWER LEVEL



SECOND LEVEL

NOT TO SCALE - This floor plan is provided for illustration purposes only. Room positions and dimensions are approximate and should be independently measured for accuracy.



Melissa Bulwith
Listing Specialist

Cell: 201.906.9337
Office: 973.376.0033 ext.101
E-mail: info@sueadler.com
sueadler.com/20Candace