

6 Plymouth Road

Summit, New Jersey



Welcome to 6 Plymouth, a spectacular 5 Bedroom 3 ½ Bath Colonial on one of Summit's most coveted blocks (amazing trick or treating and block parties)! This home boasts gorgeous architectural details, designer touches and fabulous renovations. Enjoy the home's incredible hallmarks including lovely moldings, hardwood floors, an open and airy floorplan and a flat, private yard ready for outdoor entertaining.



As you arrive, take in the home's meticulous and thoughtful landscaping and regal front entry. Enter through the welcoming front door into the bright and airy Entry Foyer complete with gleaming hardwood floors with walnut inlay, an elegant staircase and views of the Living and Family Rooms beyond. The spacious and sundrenched Living Room is an entertainer's dream with its gorgeous wall to wall Custom Built In, windows where the sunlight pours in, and plenty of room to host family and friends. Dinner parties are divine in the elegant Formal Dining Room complete with a bay window overlooking the idyllic backyard.



The Chef's Gourmet Kitchen dazzles with custom cabinetry, high-end stainless appliances and granite countertops. Just beyond, don't miss the custom pantry area with a built-in beverage refrigerator. Laundry is a snap when it's conveniently located on the First Level. A Sun Room is perfect for summer entertaining or could easily be converted to a stellar Mud Room. The backyard is easily accessed from the Sun Room making indoor and outdoor entertaining seamless. A tasteful Powder Room and 2 Car Garage round out the First Level.



Ready to retire for the evening? Take the graceful stairway to the Second Floor Landing complete with 2 Linen Closets providing ample storage. Enjoy privacy and radiant sunlight in the spacious Primary Bedroom Suite complete with two Closets and a tasteful bath with a double vanity with granite. Four other bedrooms are sundrenched with large custom closets. Bedroom 5 is flexibly being used as an Office and offers plenty of work from home space. A well-appointed Full Hall Bath, with a double vanity, rounds out the Second Level.



And there's more ... The Lower Level, with a fantastic Recreation Room, will provide endless hours of family entertainment. Equipped with plenty of room for movie watching, children's art studio, and tons of storage closets so that all toys and games will be neatly tucked away, the Lower Level provides all the space you need for any pursuit. There is also a Kitchenette with cabinetry, a refrigerator and a range making entertaining on this level even easier. A tasteful Full Bath rounds out this level.

Another showstopper of 6 Plymouth is the flat property beautifully maintained and planted to perfection. A large Bluestone Patio has plenty of room for barbequing, al fresco dining and lounging. Sitting pretty on one of Summit's best blocks, just minutes from top-notch schools, Memorial Field, NYC transportation and downtown Summit, 6 Plymouth is fabulous and will not last!



- INSIDE & OUT -

FIRST LEVEL

- Entry Foyer featuring hardwood floors laid on a diagonal with walnut inlay border, Coat Closet, staircase to Second Level, crown molding, baseboard molding, flush mount light, door to Family Room
- Living Room featuring large entry from foyer, hardwood floors, triple windows with plantation shutters, wall to wall custom built in with open and concealed storage, recessed lighting, crown molding, baseboard molding, open to Dining Room
- Dining Room featuring hardwood floors, window with plantation shutters, bay window overlooking backyard, crown molding, baseboard molding
- Family Room featuring hardwood floors, fireplace with floor to ceiling brick surround, wall to wall built in with open and concealed storage, window seat, windows at 2 exposures with plantation shutters, crown molding, wainscoting
- Gourmet Chef's Kitchen featuring hardwood floors, custom cabinetry including glass door cabinetry, granite countertops, handmade elongated subway tile backsplash, recessed lighting, stainless sink with window overlooking backyard, custom hood, Jenn-Air stainless oven/range, Miele integrated dishwasher, Jenn-Air integrated refrigerator/freezer, eat in area, door to Lower Level
- Powder Room featuring tile flooring, custom vanity with stone countertop and hammered sink, Toto toilet, window with custom window treatment, tray ceiling, recessed lighting, sconce, baseboard molding
- Rear Hallway featuring hardwood floors, custom cabinetry/pantry storage, charging station, Jenn-Air stainless beverage refrigerator, recessed lighting, door to Sun Porch, baseboard molding
- Laundry Room featuring tile flooring, custom cabinetry with sink, window with wood blind, flush mount light, baseboard molding
- Sun Porch featuring louvered windows at 2 exposures, door to Patio, ceiling fan, light
- Attached 2 Car Garage with peg storage, shelving, electric doors

SECOND LEVEL

- Wood staircase to Second Level
- Second Level Landing featuring hardwood floors, flush mount light fixtures, 2 Linen Closets, baseboard molding, drop down attic access
- Primary Bedroom Suite featuring hardwood floors, 2 sets of Double Door Custom Closets, Custom Window Seat with storage, baseboard molding, windows at 2 exposures with plantation shutters, Bath featuring tile flooring, custom double vanity with granite countertop, oversized shower with rain showerhead and designer tile surround, Kohler toilet, 3-light sconce, recessed lighting, window with custom shade
- Bedroom 2 featuring hardwood floors, Double Door Custom Closet, 2nd Closet, windows with plantation shutters, flush mount light, baseboard molding
- Bedroom 3 featuring hardwood floors, Double Door Custom Closet, windows at 2 exposures with plantation shutters, flush mount light with drum shade, baseboard molding
- Bedroom 4 featuring hardwood floors, Double Door Custom Closet, windows at 2 exposures with plantation shutters, semi-flush mount light, baseboard molding, pocket door to Bedroom 5
- Bedroom 5/Home Office featuring hardwood floors, Double Door Custom Closet, ceiling fan/light, windows with plantation shutters, baseboard molding
- Full Hall Bath featuring tile flooring, custom double vanity with granite countertop, tub/shower combination with rain showerhead and designer tile surround, Kohler toilet, two 2-light sconces, recessed lighting, window with custom shade

LOWER LEVEL

- Carpeted staircase to Lower Level
- Utility/Storage Room
- Recreation Room with multiple zones featuring carpeting, Built In Kitchenette (with custom cabinetry, sink, laminate countertop and Kenmore refrigerator/freezer, brick range with hood), storage and utility Closets, paneled wainscoting, built in seat, windows with plantation shutters, recessed lighting, sconces
- Custom Walk In Closet
- Full Bath featuring tile flooring, vanity with Corian countertop, 2-light sconce, fan, corner shower with tile surround, Kohler toilet, window with plantation shutter

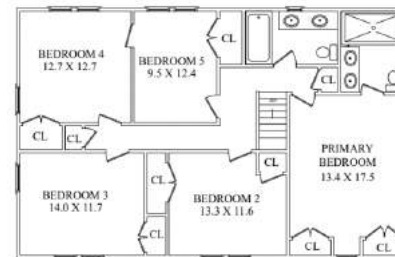
ADDITIONAL FEATURES / UPGRADES

- Renovated 2014
- Classic plantation shutters throughout

FRONT YARD / BACKYARD

- Nearly ¼ acre of flat property with professional landscaping with blooming perennials, foundation plantings and mature specimen trees
- Bluestone front walkway
- Covered front entry
- Large bluestone Patio
- Basketball hoop
- Large driveway for play
- Flat grassy areas for play, immense privacy/privacy plantings

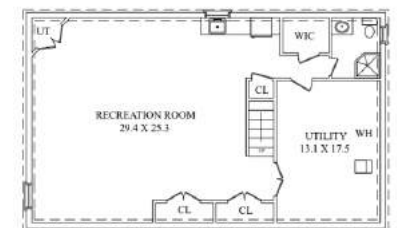
THE FLOORPLAN



SECOND LEVEL



FIRST LEVEL



LOWER LEVEL

