



27 Hoffman Street
Maplewood, NJ



MOVE RIGHT IN to this picture perfect 4 Bedroom, 3 Full and 1 Half Bath stunner located on a sought after street in Maplewood's desirable Kendal Valley neighborhood. With top to bottom renovations, an exceptional location close to downtown South Orange and Maplewood restaurants and shopping, Direct Train to NYC and blue ribbon schools, 27 Hoffman Street is just waiting to be called home.

As you pull up to this home, prepare to be transfixed by the chic exterior with on-trend black windows and a Front Porch perfect for rocking chairs and lemonade. Enter through the warm, wood front door and flow easily into the sun-drenched Living Room with its original statement fireplace, gleaming hardwood floors and windows at three exposures so that the light pours in.



Dinner parties are divine in the elegant formal Dining Room featuring an extraordinary, brushed gold and glass globe light fixture, and plenty of room for dinner parties and gatherings. Flow easily into the extraordinary Chef's Gourmet Kitchen that is truly the showpiece of the home. Gray washed wood cabinets, quartz countertops, a cool honeycomb backsplash behind the oven/range and high-end Samsung appliances are the ultimate in function and style. And as if that wasn't enough, a cheery Breakfast Bar makes the Kitchen delightful. A tasteful Powder Room rounds out the First Level.





Ready to retire for the evening? Take the stately staircase that flows from the Kitchen and Living Room, to find the lovely Primary Bedroom Suite featuring hardwood floors, windows at two exposures, and a spa-like ensuite Bath with a delightful modern farmhouse vibe. Roomy bedrooms 2 and 3 share the beautifully renovated Hall Bathroom with chic modern farmhouse tile and a rustic wood vanity. All bedrooms are sundrenched and include generous closets. Don't miss the Third Level with a spectacular Home Office (or use as Bedroom 4) and the BEST Dressing Room/Walk In Closet around. Chic custom built-ins include drawers and so much hanging, shelf, and shoe storage.

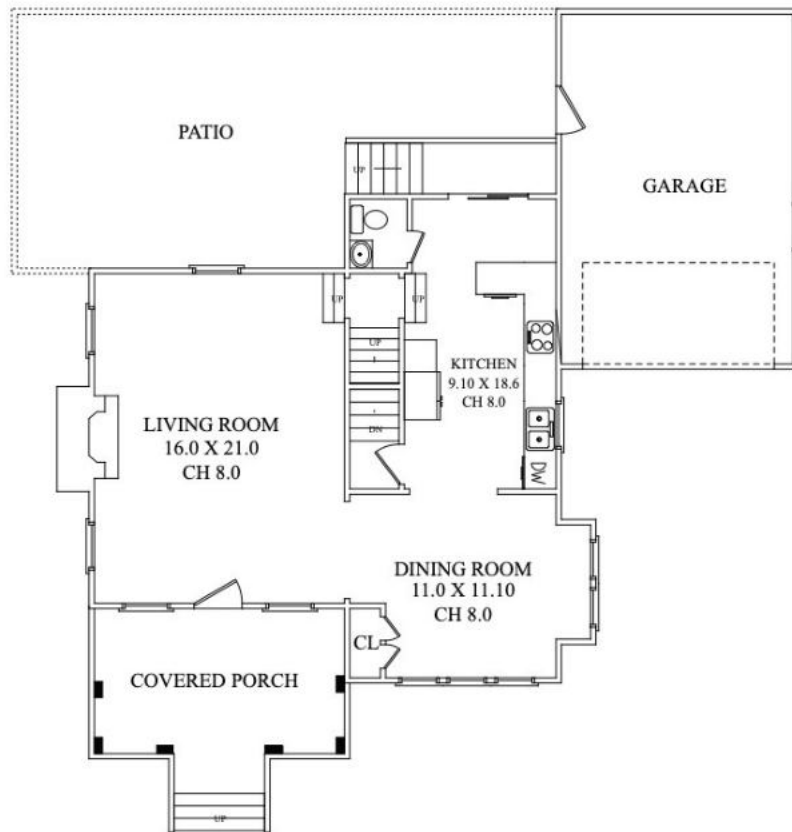


And there's more! The fully finished Lower Level boasts a large Recreation Room and/or Play Room with plenty of space for movie watching and arts and crafts. A large Exercise/Laundry Room only adds to the Lower Level's appeal. Finally, a chic NEW Full Bath and tons of storage round out the Lower Level. Another incredible star of this home is the enormous, fenced-in backyard (the largest on the block) offering immense privacy and plenty of room for outdoor barbecues, fire pits, and play.

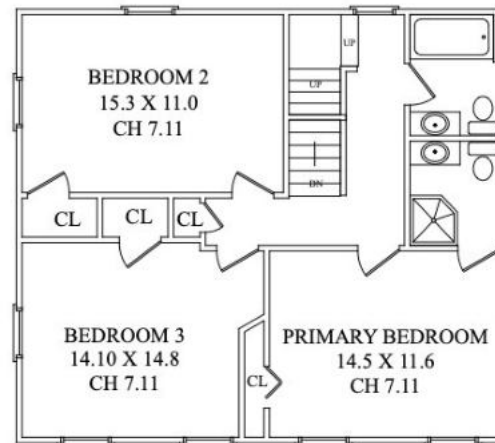
This truly is an amazing opportunity to own a fantastic home with fabulous renovations in one of New Jersey's hottest towns. Close to NYC transportation, downtown South Orange and Maplewood shopping and restaurants, 27 Hoffman St is an absolute must see!



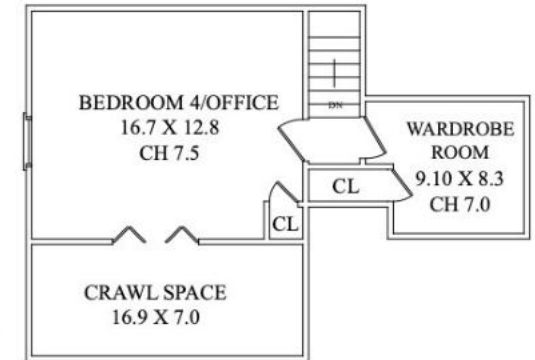
THE FLOORPLAN



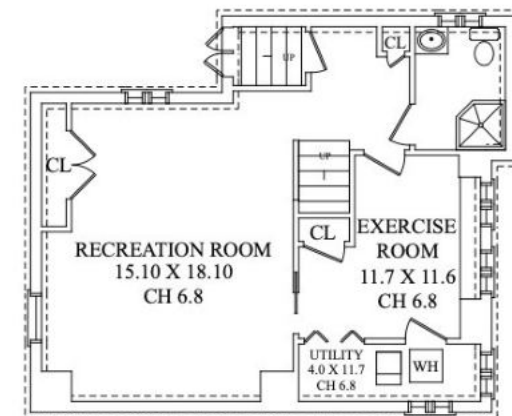
FIRST LEVEL



SECOND LEVEL



THIRD LEVEL



LOWER LEVEL

NOT TO SCALE - This floor plan is provided for illustration purposes only.
Room positions and dimensions are approximate and should be independently measured for accuracy

- INSIDE & OUT -

FIRST LEVEL

- Living Room featuring hardwood floors, original fireplace with brick surround and stone mantle ("As Is" – no known issues), windows at 3 exposures with custom shades, flush mount light, recessed lighting, crown molding, baseboard molding, staircase to Second Level
- Dining Room featuring hardwood floors, windows at 2 exposures with custom shades, designer modern brushed gold light fixture, crown molding, baseboard molding, Double Door Closet, open to Kitchen
- Gourmet Chef's Kitchen featuring hardwood floors, custom gray cabinetry with brushed gold hardware, quartz countertop, marble subway tile backsplash, decorative hexagonal tile backsplash behind oven/range, custom hood, Samsung stainless 5-burner oven/range, Samsung stainless dishwasher, Samsung "smart" stainless AKG refrigerator/freezer with ice, crushed ice and water dispenser, Samsung stainless built in microwave, recessed lighting, under cabinet lighting, pendant light over sink, door to Lower Level, staircase to Second Level
- Breakfast Bar Area with vaulted ceiling, pendant light and sliding doors to rear Deck, door to Powder Room
- Powder Room featuring penny floor tile, bead board wainscoting, pedestal sink, flush mount light, baseboard molding, crown molding
- 1 Car Garage with door to backyard ("As Is" – no known issues)

SECOND LEVEL

- Original staircase to Second Level
- Second Floor Landing hardwood floors, Linen Closet, flush mount lighting, baseboard molding, crown molding
- Primary Bedroom Suite featuring hardwood floors, flush mount light with drum shade, Closet, windows at 2 exposures with custom shades, crown molding, baseboard molding, Bath featuring farmhouse style floor tile, medicine cabinet, gray vanity with marble countertop, corner shower with fan shaped tile, window with custom shade, farmhouse style sconce, crown molding, baseboard molding
- Bedroom 2 featuring hardwood floors, windows at 2 exposures with custom shades, Closet, wallpaper accent wall, crown molding, baseboard molding
- Bedroom 3 featuring hardwood floors, windows at 2 exposures with custom shades, Closet, crown molding, baseboard molding
- Full Hall Bath featuring farmhouse style floor tile, medicine cabinetry, rustic look vanity with fully integrated marble look sink, farmhouse style sconce, tub/shower combination with elongated subway tile surround

THIRD LEVEL

- Staircase to Third Level, sconce
- Custom Dressing Room featuring hardwood floors, custom drawers, shoe, shelves and hanging storage, vaulted ceiling, flush mount light, window with custom shade, Closet, baseboard molding, bench
- Bedroom 4 featuring hardwood floors, vaulted ceiling, flush mount lighting, window with custom shade, eave storage, Closet, baseboard molding

LOWER LEVEL

- Painted staircase to Lower Level
- Recreation Room featuring wood look flooring, recessed lighting, baseboard molding, Oversized Double Door Game/Toy Closet, Utility Closet
- Door to Bilco doors/staircase
- Laundry Room/Gym featuring wood look flooring, Closet, Utility Closets, mirrored area, pocket door to Recreation Room
- Full Bath featuring gray oversized hexagonal tile, corner shower with marble floor tile and subway wall tile, vanity, flush mount light, baseboard molding, medicine cabinet
- French drains

BACKYARD

- Largest backyard on the block
- Brick front walkway
- Bluestone stepping stones
- Bluestone front steps with stacked stone risers
- Front Porch, beadboard ceiling, farmhouse style lighting
- Rear Wood Deck/Stairs off Kitchen
- Brick Patio
- Fully fenced in (3 sides NEW) with lush green space, area for fire pit
- Fence ("As Is" – no known issues)
- Swing set

ADDITIONAL FEATURES & UPGRADES

- NEW 3-zones AC (3 thermostats) - 2 units
- "Smart" thermostats/control panels with security system
- On-trend black windows throughout
- Many original doors and hardware throughout
- NEW sewer line
- Generator hookup
- NEW Blackout and light filtering custom shades throughout



PRESENTED BY
sueadler 
THE #1 KELLER WILLIAMS TEAM IN NEW JERSEY

kw PREMIER
PROPERTIES
KELLERWILLIAMS

Each Keller Williams office is individually owned and operated.



Listing Specialist
Amy Deuchler

CELL: 973.936.9129
OFFICE: 973.376.0033 x101
EMAIL: info@sueadler.com
sueadler.com/27hoffman