

kw PREMIERE
PROPERTIES
KELLERWILLIAMS.
*Each Keller Williams office is
individually owned and operated.*

sueadler
THE #1 KELLER WILLIAMS TEAM IN NEW JERSEY

5 St. Lawrence Avenue
Maplewood, New Jersey



Move right in to this picture perfect 4 Bedroom, 2.1 Bath stunner located on a fabulous block in the sought after Kendal Valley/Orchard Park neighborhood of Maplewood. Every inch of this home was beautifully renovated in 2019! This is the kind of house where all you need to do is bring your bags ... NOT A THING needs to be done! With an exceptional location close to adorable Ridgewood Row, downtown South Orange, Maplewood Village, a Jitney stop, fabulous Farrell Field and Orchard Park, and Direct Train to NYC, 5 St. Lawrence is just waiting to be called home.



As you pull up to this home, prepare to be transfixed by the sleek grey exterior, on trend black windows, crisp landscaping, and a cheery blue door.

Enter into the spacious vestibule boasting built in cubbies and a large Coat Closet teeming with storage. Flow easily into the sun-drenched Living Room with its gorgeous, original statement fireplace with a floor to ceiling brick mantle and a large niche for display. This room radiates with sunlight and is well suited for entertaining family and friends.

Flow effortlessly into the relaxing Den with plenty of room for game night, TV watching, or just curling up with a novel.



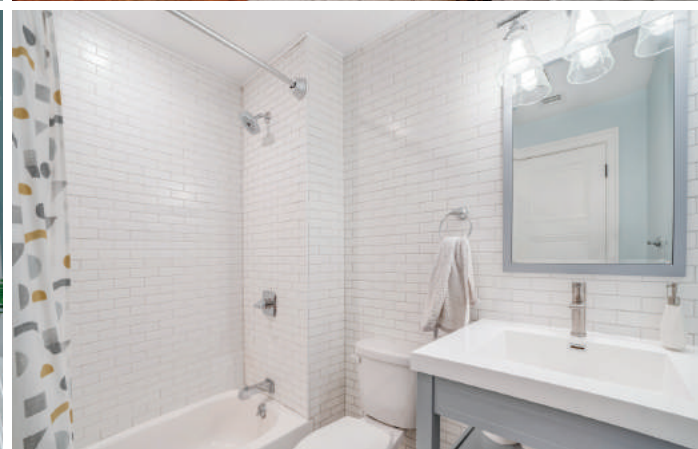


Flow easily into the extraordinary Chef's Gourmet Kitchen that is truly the showpiece of the home. Crisp, white wood shaker-style cabinets, quartz countertops, on trend brushed gold hardware, and stainless appliances throughout make the kitchen the ultimate in function and style. And as if that wasn't enough, the adjacent, dazzling Dining Room, with a stunning brushed gold pendant light, make dining delightful. The Dining Room opens directly to the backyard making indoor/outdoor entertaining seamless.





Outside, the serene, fully fenced in yard includes an enormous NEW Paver Patio with plenty of room for dining, barbequing and a large conversation area. Flat grassy space is perfect for play and summer fun. Back inside, a convenient First Level Laundry Room and modern farmhouse style Powder Room round out the First Level.



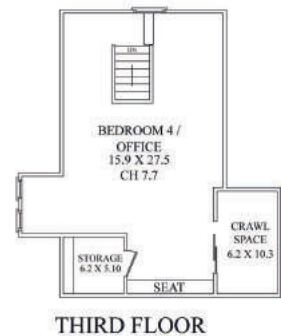
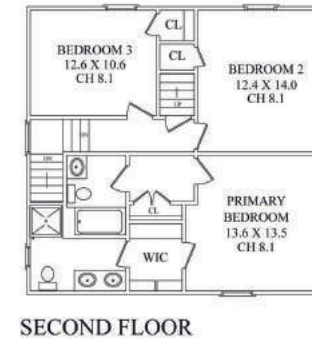
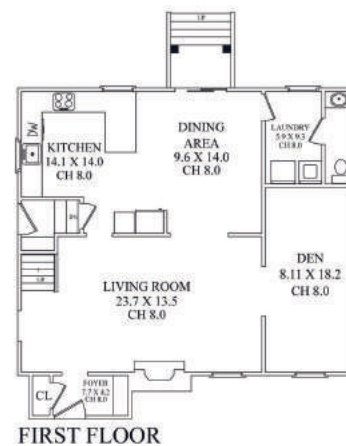
Ready to retire for the evening? Take the original stately staircase to the lovely Primary Bedroom Suite that really wows! Windows at 2 exposures, a custom Walk In Closet, and a sleek, magazine-worthy Bath make this room an incredible private oasis. Bedrooms 2 and 3 are sunny, bright and include roomy closets. The RENOVATED Hall Bathroom dazzles with chic hexagonal and subway tile. Don't miss the Third Level with its own private Bedroom perfect as a Bedroom, Office, or for simply hanging out.



And there's more! The unfinished Lower Level has so much potential for a large Recreation Room, Play Room and/or Wine Room ... you choose!

This truly is an amazing opportunity to own a fantastic home with fabulous renovations in one of New Jersey's hottest towns. In a neighborhood known for Halloween, its block parties and close knit neighbors, 5 St. Lawrence will not last!

THE FLOORPLAN



NOT TO SCALE - This floor plan is provided for illustration purposes only.
Room positions and dimensions are approximate and should be independently measured for accuracy.

INSIDE & OUT

FIRST LEVEL

- Entry Area featuring original door with arched molding above, hardwood floors, rustic semi-flush light fixture with glass shade, Built In Storage with cubbies and hooks, Coat Closet, baseboard molding
- Living Room featuring hardwood floors, original fireplace with floor to ceiling brick mantle and display niche, recessed lighting, baseboard molding, windows with custom roller shades, original staircase to Second Level
- Den/Family Room featuring large entry, hardwood floors, recessed lighting, window with custom roller shade, baseboard molding
- RENOVATED Gourmet Chef's Kitchen featuring hardwood floors, crisp white custom shaker style cabinetry, quartz countertops, hexagonal marble tile backsplash, Breakfast Bar with seating for 3, recessed lighting, Frigidaire stainless French door refrigerator/freezer, Frigidaire stainless dishwasher, Frigidaire stainless 5 burner oven/range, windows with custom woven shades, on trend brushed gold hardware, door to Lower Level
- Dining Room featuring hardwood floors, baseboard molding, sliding door to Patio
- Laundry Room featuring modern farmhouse style tile, washer and dryer hookup, recessed lighting, window with custom roller shade, door to Powder Room
- Powder Room featuring modern farmhouse style tile, modern floating vanity with integrated top, sconce, recessed light, baseboard molding

SECOND LEVEL

- Original wood staircase to Second Level
- Second Floor Landing featuring hardwood floors, Double Door Linen Closet, recessed lighting, baseboard molding
- Primary Bedroom Suite featuring hardwood floors, windows at 2 exposures with custom roller shades, Walk In Closet with custom storage, recessed lighting, baseboard molding, RENOVATED Primary Bath featuring designer penny tile, chic white double vanity with integrated top, oval tilt mirrors, floor to ceiling oversized designer subway tile wall tile, frameless glass shower, sconces, recessed lighting, window with privacy glass

SECOND LEVEL CONT...

- Bedroom 2 featuring hardwood floors, windows at 2 exposures with custom roller shades, semi-flush light with brushed gold drum shade, Closet, baseboard molding
- Bedroom 3 featuring hardwood floors, windows at 2 exposures with custom roller shades, semi-flush light with silver drum shade, Closet, baseboard molding
- RENOVATED Full Hall Bath featuring hexagonal floor tile, chic gray vanity with fully integrated sink, floor to ceiling designer subway tile, tub/shower combination with subway tile surround, 3-light farmhouse style sconce, recessed light, baseboard molding

THIRD LEVEL

- Bedroom 4/Office featuring carpeting, vaulted ceiling, recessed lighting, eave storage, large Closet, windows at 2 exposures, baseboard molding

LOWER LEVEL

- Side Entrance with NEW Portico
- Unfinished Lower Level with potential for Recreation Room, Exercise Room, and/or Wine Storage
- Utilities
- NEW Sump pumps and French drains (basement DRY during Ida)

FRONT/BACKYARD

- Paver front walkway
- Bluestone front steps
- NEW fence with gate surround yard
- NEW side Portico
- Bluestone Rear Steps with stacked stone, NEW Portico
- Huge Paver Patio with dining and conversation areas, carries all the way to driveway/garage
- 1 Car Detached Garage

ADDITIONAL FEATURES/UPGRADES

- Entire house gut renovated in 2019; all new systems/wiring
- On trend black windows
- Painted soothing grays and neutrals throughout
- Generator
- Heat/AC, 2 zones, forced air
- Ring doorbell

CELL: 973.936.9129

OFFICE: 973.376.0033 x101

EMAIL: info@sueadler.com

sueadler.com/5StLawrence

