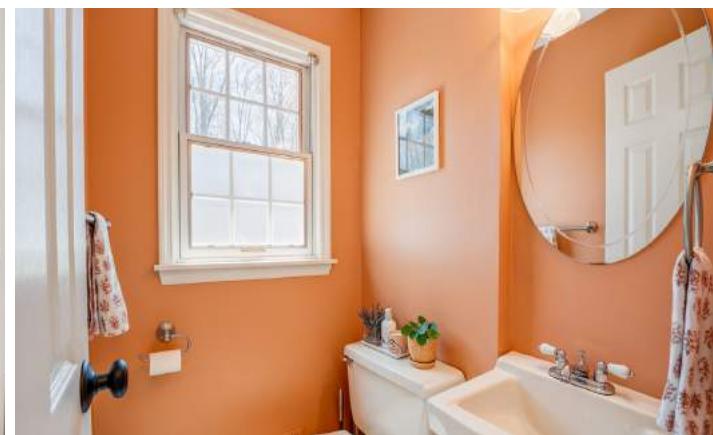
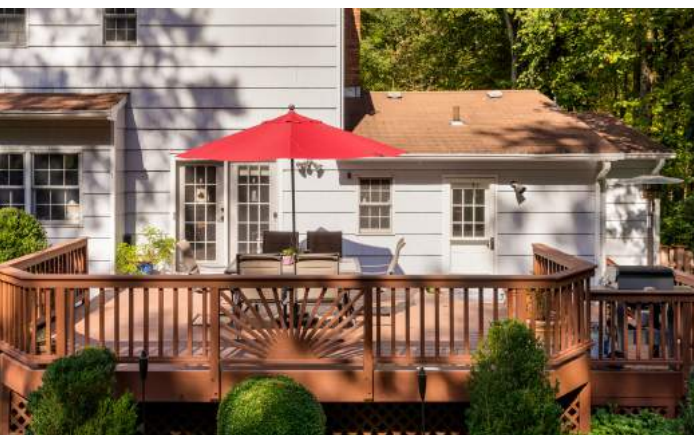


143 Hamilton Avenue
Berkeley Heights, NJ



Welcome to 143 Hamilton Avenue! Nestled on a private cul de sac in Berkeley Heights, you'll find this stunning 4 Bedroom, 2.5 Bath home that checks each and every box. A lovely, natural setting, deep level property and an open and airy floor plan are just a few of this home's incredible highlights. With close proximity to Columbia Middle School, Columbia Park (with recreation, fields, pool, tennis courts), Berkeley Swim Club, a vibrant downtown area and easy access to Route 78 and New York City Train, this home is the perfect place to call home. Drive down the tree lined street and take in the sprawling front lawn situated across from protected wetlands creating a serene natural setting. A curved front walkway, stately shutters and a cherry red front door all make for delightful curb appeal.





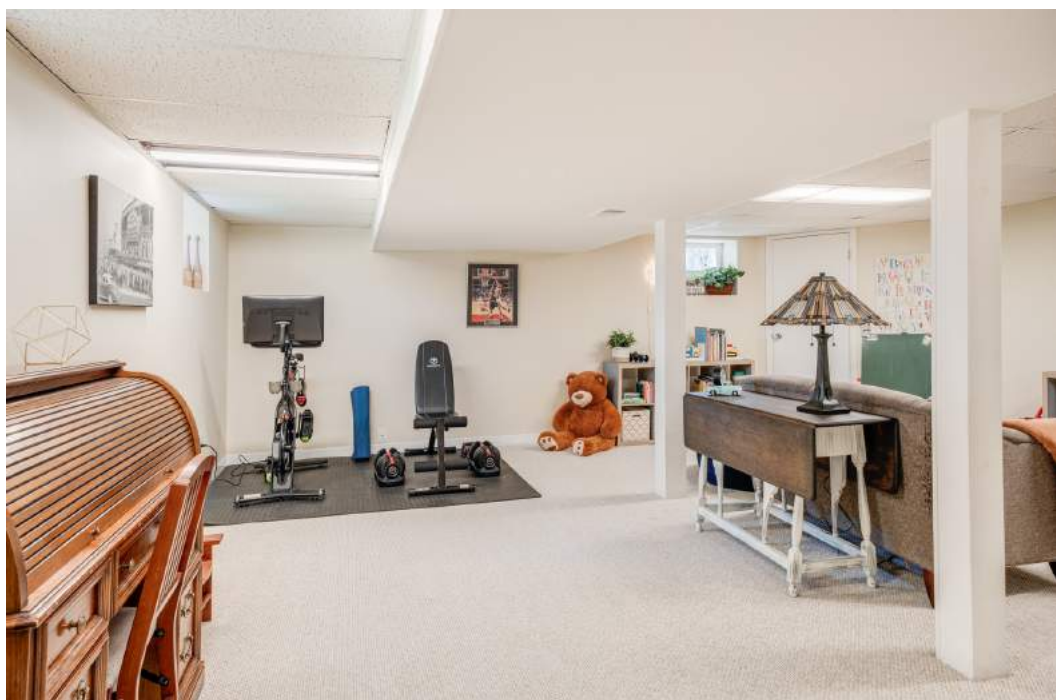
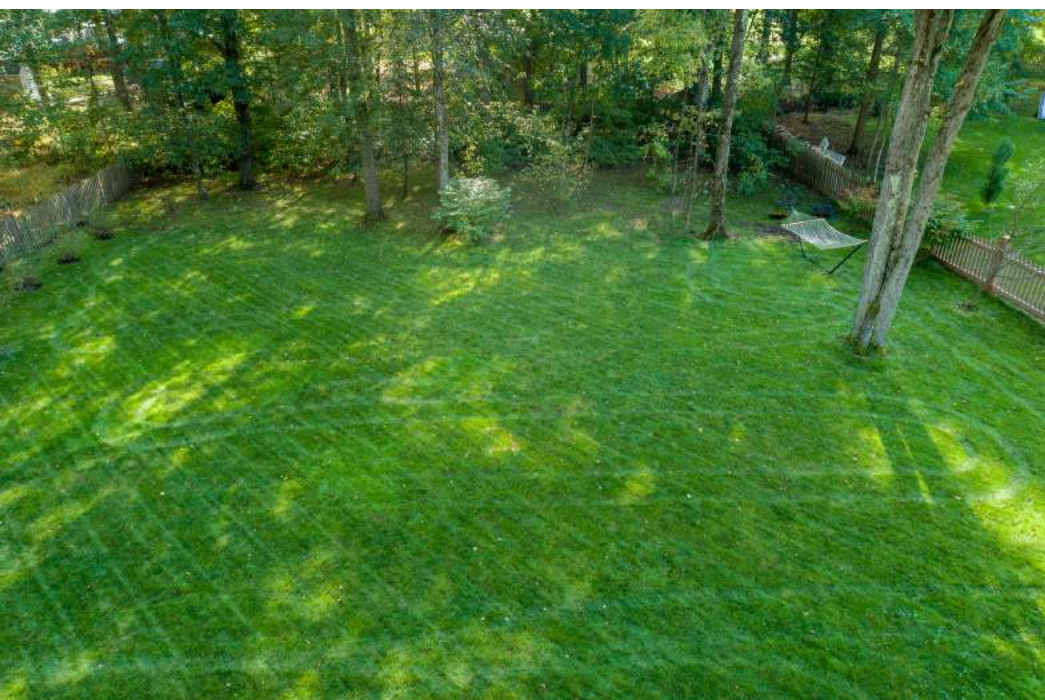
Enter into the Entry Foyer and make your way to the Pinterest Perfect Living Room that includes a huge picture window where the light pours in. Dinner parties are divine in the elegant Dining Room with a statement brushed gold chandelier and a large window overlooking the idyllic backyard. Any chef is sure to be pleased by the updated Kitchen with custom cabinets painted in crisp white and navy, granite countertops and stainless steel appliances. The Kitchen includes a Breakfast Area perfect for your morning cup of coffee or family meals. The Kitchen opens up to the BEST Family Room around. A rustic brick fireplace gives this room a cool, relaxed vibe. Indoor/outdoor entertaining is seamless as Double French Doors lead out to the Deck. A conveniently located First Level Laundry Room could easily double as a Mud Room. A tasteful Powder Room and an oversized 2-Car Garage with storage round out the First Level.



When it's time to retire for the evening, head up the staircase to the Second Level to find the private and light filled Primary Bedroom Suite with a Walk In Closet and well-appointed bath. Down the hall, three spacious bedrooms are steeped in sunlight and include gleaming hardwood floors and roomy Double Door Closets. Two Hallway Double Door Closets and a tasteful Full Hall Bath round out this level.

Another showstopper of this home is the extraordinarily private, deep and lush property with only one neighbor, offering immense privacy. Mature specimen trees and plenty of space are yours to enjoy from the relaxing Deck. Whether it's al fresco dining, entertaining or play, 143 Hamilton has space for it all.





And that's not all! The Lower Level boasts a spacious Recreation Room/Play Room with plenty of room for TV watching and play time. A Work Room is the ideal spot for DIY projects. This truly is an exceptional opportunity to own a beautifully maintained home in a gorgeous setting in sought after Berkeley Heights. 143 Hamilton is an absolute must see!

INSIDE & OUT

FIRST LEVEL

- Entry Foyer featuring cherry red door with sidelites, tile flooring, semi-flush mount light fixture, baseboard molding, staircase to Second Level, Coat Closet
- Family Room (open to Kitchen) featuring hardwood floors, fireplace with rustic floor to ceiling brick mantle, paneled walls painted neutral hue, 2 oversized windows at front, French door at rear, baseboard molding, crown molding
- Living Room featuring hardwood floors, picture window, crown molding, baseboard molding
- Dining Room featuring hardwood floors, picture window with ledge overlooking backyard, on-trend chandelier, wall shelf, crown molding, baseboard molding
- Eat In Kitchen featuring hardwood floors, custom cabinetry (navy lower, white upper), granite countertops, mosaic tile backsplash, recessed lighting, island, Pantry, Maytag stainless refrigerator/freezer, Kitchen Aid stainless 4 burner oven/range, Bosch stainless dishwasher (NEW 2019)
- Breakfast Area featuring hardwood floors, 2 windows, pendant light fixture
- Laundry Room (could also be used as a Mud Room) featuring tile flooring, built in cabinetry, utility sink, LG front loader washer, Whirlpool front loader dryer, door to Deck, flush mount light fixture, door to Garage, window
- Powder Room featuring floor tile, baseboard molding, window, wall mount sink, sconce
- Oversized 2-Car Garage

LOWER LEVEL

- Carpeted staircase to Lower Level
- Recreation Room featuring carpeting, drop ceiling with lighting, baseboard molding, Utility Closet, Frigidaire stainless refrigerator/freezer, chalk area, Walk In Storage Closet
- Work/Utility Room featuring cement floor, peg storage, open shelving, work table
- Sump pump (no water during Ida)

SECOND LEVEL

- Second Level Landing featuring hardwood floors, flush mount light fixtures, Double Door Closet, Double Door Linen Closet, baseboard molding, pull down attic for additional storage
- Primary Bedroom Suite featuring hardwood floors, flush mount light fixture, baseboard molding, crown molding, Walk In Closet, Bathroom featuring vanity with quartz countertop, tile wainscoting, shower, Linen Closet, medicine cabinet, sconce, recessed light, window
- Full Hall Bath featuring marble look tile flooring, vanity with granite countertop, beadboard wainscoting, medicine cabinet, sconce, window, tub/shower combination with tile surround
- Bedroom 2 featuring carpeting, windows at 2 exposures, Double Door Closet, chandelier, baseboard molding
- Bedroom 3 featuring carpeting, windows at 2 exposures, Double Door Closet, flush mount light fixture, baseboard molding
- Bedroom 4 (flexibly being used as an Office) featuring carpeting, 2 windows Double Door Closet, flush mount light fixture, baseboard molding

FRONT & BACK YARD

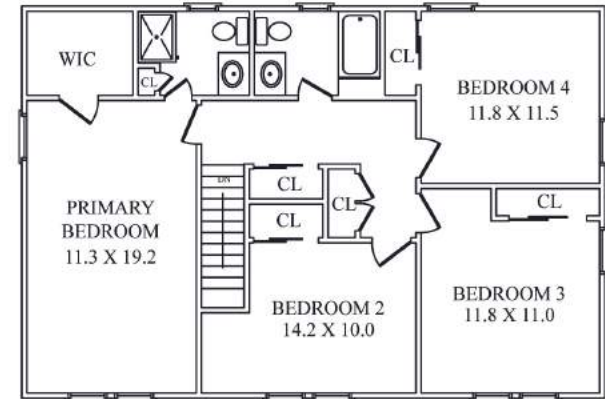
- Lush, flat front yard with professional landscaping
- Wood Deck (stained 2020), nook for BBQ
- Flat, fenced in rear yard with tons of green space and mature specimen trees
- Shed
- Side paver pathway
- Maintenance free fence
- Irrigation system

ADDITIONAL FEATURES & UPGRADES

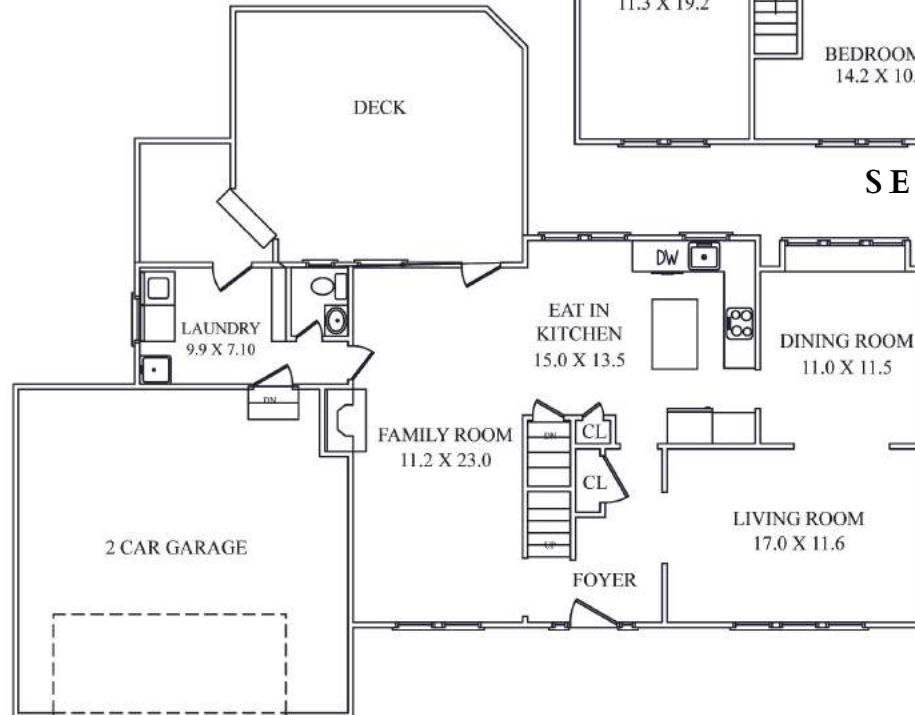
- Exterior painted 2020
- NEW hot water heater 2021

sueadler.com/143Hamilton

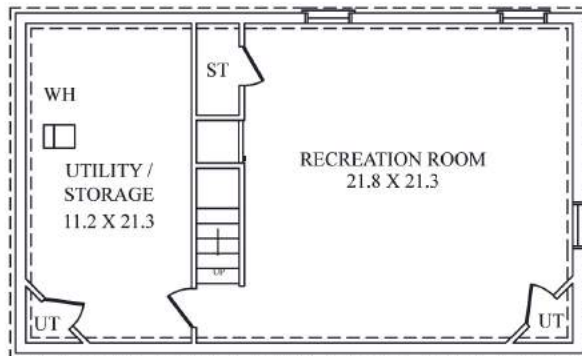
THE FLOORPLAN



SECOND LEVEL



FIRST LEVEL



LOWER LEVEL

*NOT TO SCALE - This floor plan is provided for illustration purposes only.
Room positions and dimensions are approximate and should be independently measured for accuracy.*



CELL: 973.936.9129
OFFICE: 973.376.0033 x101
EMAIL: info@sueadler.com
sueadler.com/143Hamilton



Each Keller Williams office is individually owned and operated.

