



20 Florie Farm Road
◆————◆
Mendham, New Jersey



Welcome to 20 Florie Farm Road! Nestled on one of Mendham's most desirable streets, you'll find this stunning 5 Bedroom, 2.1 Bath home that checks each and every box. A lovely, natural setting, deep property with a Pool, and an open and airy floor plan are just a few of this home's incredible highlights. Minutes to historic downtown Mendham and Morristown restaurants/shopping/cultural events, Mendham Borough Park, Mountain Valley Park (home to fishing/ice skating at "The Mud Hole") and backing up to Jockey Hollow's Patriot's Path, this is the perfect spot to call home.

Drive down the tree lined street and take in this home bursting with curb appeal with a sprawling front lawn, a front porch and charming black shutters. Enter into the Entry Foyer featuring gleaming hardwood floors and a large Coat Closet. Make your way to the Living Room that includes oversized windows at 2 exposures, where the light pours in.



Dinner parties are divine in the elegant Dining Room with a charming chair rail and windows overlooking the idyllic backyard. Any chef is sure to be impressed by the lovely Kitchen with custom cabinets, granite countertops, an island for extra prep space, and stainless steel appliances. The Kitchen includes plenty of room for a table for family meals and opens up to the BEST Family Room around. Soaring ceilings, windows at 3 exposures, and plenty of room to spread out give this room a cool, relaxed vibe.





A conveniently located First Level Laundry Room makes laundry an absolute pleasure and leads to a fantastic Deck. Working from home is a dream in the spacious Den/Office with its own rustic fireplace. A tasteful Powder Room and a 2-Car Garage with storage round out the First Level.



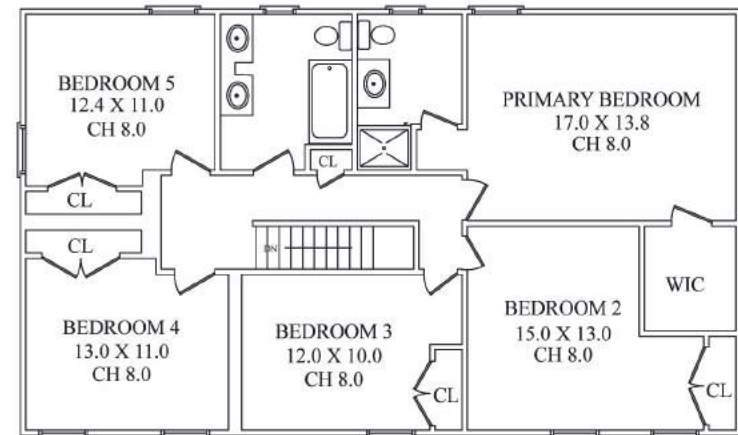
When it's time to retire for the evening, take the staircase to the Second Level to find the private and light-filled Primary Bedroom Suite with a Walk In Closet and well-appointed bath. Down the hall, 4 spacious bedrooms are steeped in sunlight and include gleaming hardwood floors and roomy Double Door Closets. A tasteful Full Hall Bath, with 2 crisp white vanities, rounds out this level. And that's not all! The Lower Level boasts a NEW (2020) Recreation Room/Play Room with plenty of room for TV watching and arts and crafts.



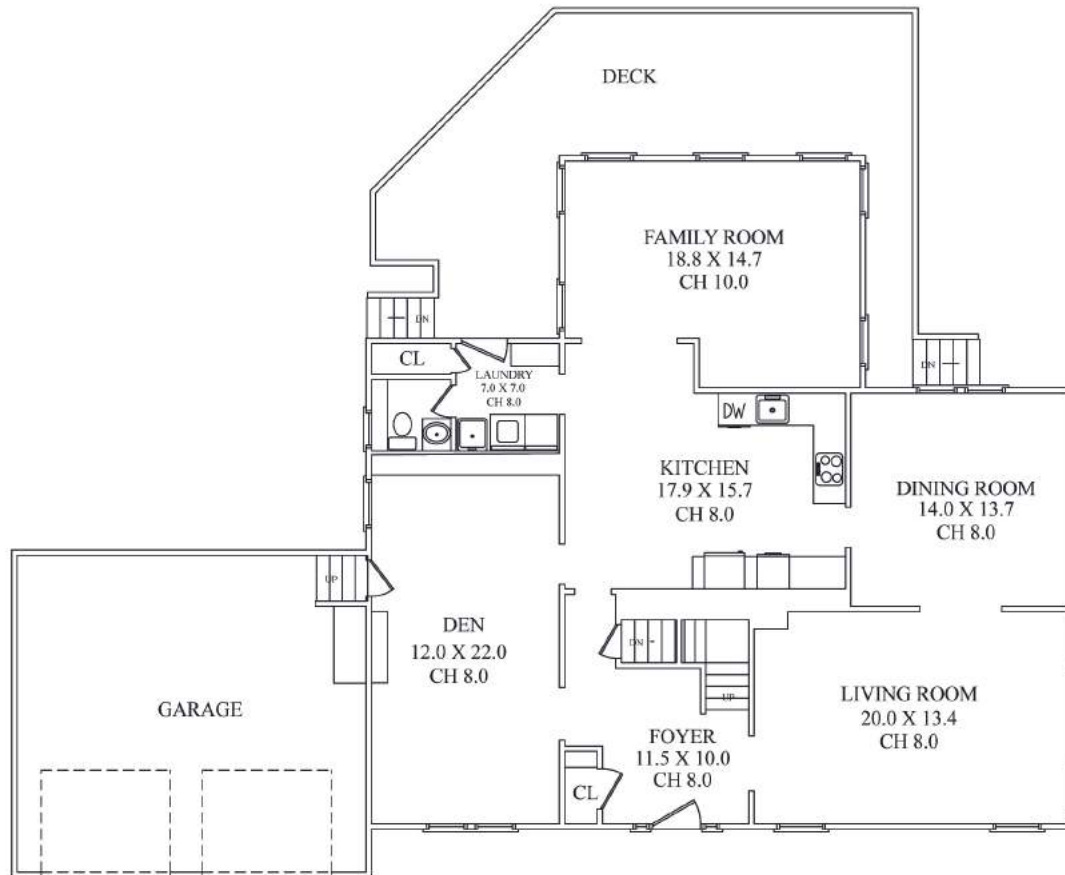
Another showstopper of this home is the extraordinarily deep property with a heated Pool. Mature specimen trees and plenty of space are yours to enjoy from the relaxing Deck or when lounging at the Pool. The expansive property backs up to Jockey Hollow's Patriot's Path meaning you can take incredible hikes right from your backyard!

This truly is an exceptional opportunity to own a beautiful home in a gorgeous setting in sought after Mendham. Whether it's al fresco dining, swim parties or play, 20 Florie Farm has space for it all and is an absolute must see!

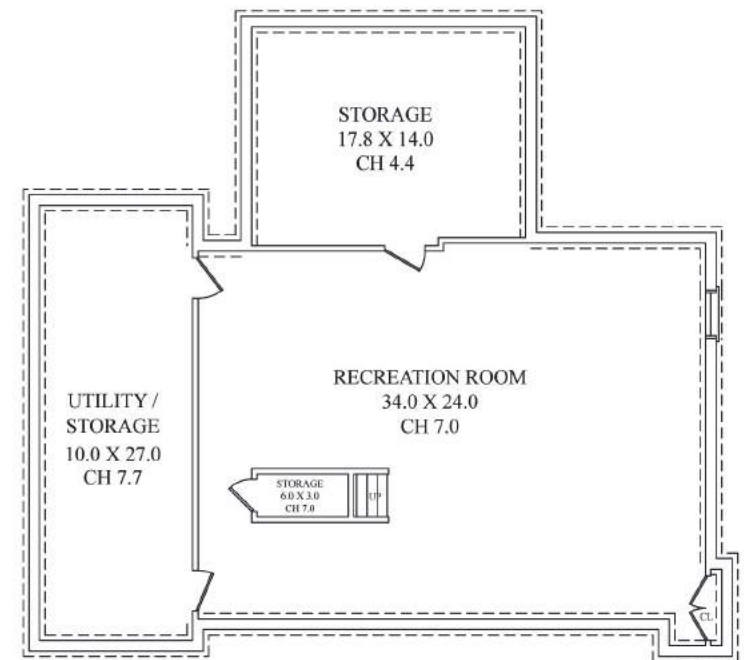
THE FLOORPLAN



SECOND FLOOR



FIRST FLOOR



LOWER LEVEL

NOT TO SCALE - This floor plan is provided for illustration purposes only.
Room positions and dimensions are approximate and should be independently measured for accuracy

INSIDE & OUT

FIRST LEVEL

- Entry Foyer featuring original front door, hardwood Entry Foyer featuring glass door with whole glass sidelites, hardwood floors, Coat Closet, baseboard molding, crown molding, staircase to Second Level, flush mount light fixture, door to Lower Level
- Living Room featuring hardwood floors, recessed lighting, oversized windows at 2 exposures, baseboard molding, crown molding, open to Dining Room and Foyer
- Dining Room featuring hardwood floors, chair rail, oversized double windows, chandelier, baseboard molding, crown molding
- Den/ Office featuring hardwood floors, fireplace with brick surround, door to Garage, recessed lighting, oversized windows at 2 exposures
- Eat In Chef's Kitchen featuring custom cabinetry, granite countertops, island, subway tile backsplash, GE stainless refrigerator/freezer, Whirlpool stainless dishwasher, GE stainless cooktop, GE wall oven, recessed lighting, pendant lighting over island, peek through over sink to Family Room, open to Family Room
- Step down Family Room featuring vaulted ceiling, hardwood floors, ceiling fan, oversized windows at 3 exposures, recessed lighting
- Laundry Room featuring hardwood floors, Broom Closet, Speed Queen washer and dryer, door to rear Deck, built in cabinetry with quartz countertop, baseboard molding, flush mount light fixture
- Powder Room featuring hardwood floors, wall mount sink, 2 light sconce, window, baseboard molding
- 2 Car Garage with storage

SECOND LEVEL

- Staircase with runner to Second Level
- Second Level Landing featuring hardwood floors, Linen Closet, flush mount light fixture, drop down attic access
- Primary Bedroom Suite featuring hardwood floors, windows at 2 exposures, Walk In Closet, baseboard molding, Primary Bath featuring wood look flooring, vanity with integrated countertop, 3 light sconce, window, shower

SECOND LEVEL CONT...

- Bedroom 2 featuring hardwood floors, Double Door Closet, 2 windows, baseboard molding, ceiling fan/light fixture
- Bedroom 3 featuring hardwood floors, Double Door Closet, window, baseboard molding, ceiling fan/light fixture
- Bedroom 4 featuring hardwood floors, Double Door Closet, 2 windows, baseboard molding, ceiling fan/light fixture
- Bedroom 5 featuring hardwood floors, Double Door Closet, windows at 2 exposures, baseboard molding, ceiling fan/light fixture
- Full Hall Bath featuring wood look flooring, 2 vanities with integrated countertops, tub/shower combination, 4 light sconce, baseboard molding, window

RENOVATED LOWER LEVEL (REDONE 2020)

- Carpeted staircase to Lower Level
- Recreation Room featuring carpeting, drop ceiling with recessed lights, Double Door Storage Closet, baseboard molding
- Arts and Crafts Area with built in chalkboard, Storage Closet under stairs
- Utility Room
- Crawl space storage area

FRONT/BACKYARD

- Paver front walkway
- Covered front entry/porch
- Rear Deck
- Heated Pool
- Full grading and drainage system installed
- Fenced in
- Dog run

ADDITIONAL FEATURES/UPGRADES

- Whole house generator
- Exterior French drains installed
- Installed Insulation for the Family Room
- Installed new outdoor fence
- Newer water heater

CELL: 973.936.9129

OFFICE: 973.376.0033 x101

EMAIL: info@sueadler.com

sueadler.com/20FlorieFarm

