

*124 Norfolk Avenue*  
—◆—  
*Maplewood, New Jersey*





Welcome to 124 Norfolk Avenue, bursting with original charm, moldings and built ins that you just don't see every day. Perched on a spacious corner lot, you'll find this perfectly proportioned 3 Bedroom, 2 Full and 2 Half Bath home being offered "as is."

This is an incredible opportunity to own a home with spacious rooms, great flow and so much potential in Maplewood's desirable College Hill neighborhood. This classic brick colonial has the Jitney stop at your front door and is close to Maplecrescent Park, Memorial Park, the Maplewood Public Library, Maplewood Village and Maplewood Station's direct train to New York City. Simply put, this home will not last!

As you approach the flagstone walkway, you'll be greeted by a charming front landing with the original front door. Enter into a large Entry Vestibule with 2 deep Coat Closets. Enter via a French door into the Entry Foyer and prepare to be transfixed by the scale and original details of this home. Original hardwood floors with walnut inlay, the original staircase with a decorative iron railing and decorative, deep crown moldings are just a few of the details that catch your eye. Flow easily into the Living Room where your eye is immediately drawn to the warm and welcoming fireplace and wall to wall original built ins perfect for displaying all your novels and family heirlooms.





Flow into the spacious and elegant Formal Dining Room where you will immediately envision relaxed dinner parties and family gatherings. Original wainscoting, a bay of windows and original hardwood floors make this room exquisite. The Dining Room flows into the Kitchen with custom wood cabinetry, granite countertops and stainless steel appliances. A charming Breakfast Room includes corner China cabinets and plenty of room for family meals. A tasteful Powder Room rounds out the First Level.













When it's time to retire for the evening, head up to the Second Level featuring the continuation of gorgeous hardwood floors and charming details throughout. Privacy abounds in the light filled and spacious Primary Bedroom Suite with a beautiful original Vanity/Dressing Area, a Walk In Closet and well-appointed bath. Bedrooms 2 and 3 boast plenty of sunlight and include Double Door Closets. The Full Hall Bath dazzles with a warm wood vanity, neutral tile and a tub/shower combination. Two Linen Closets on the second level offer plenty of additional storage.

And that's not all! There is SO MUCH potential on the Lower Level. The largest room would make a perfect Recreation Room or Play Room. A smaller room, directly off of the 2 Car Garage, would be ideal as a Mud Room or Exercise Area. A Laundry Room, Half Bath and storage round out the Lower Level.

In the backyard, just off the Living Room, you will find a lovely Sun Porch perfect for hot days and breezy nights. The Sun Porch leads out to the enormous property with plenty of room for play and outdoor entertaining.

This is an amazing opportunity to take a gorgeous vintage home in one of New Jersey's hottest towns and make it entirely your own. 124 Norfolk Avenue is an absolute must see!



# INSIDE & OUT

## FIRST LEVEL

- Entry Vestibule featuring original front door, original tile floor, 2 large Coat Closets, flush mount light fixture, French door to Entry Foyer
- Entry Foyer featuring original hardwood floors with walnut inlay, original staircase with decorative iron railings, decorative crown moldings, baseboard moldings, flush mount light fixture
- Living Room featuring original hardwood floors with walnut inlay, original fireplace with original custom mantle and stone surround, wall to wall original custom built ins with open and concealed storage and decorative details and arches, decorative crown moldings, baseboard moldings, oversized windows at 2 exposures, door to Sun Porch, door to Powder Room
- Sun Porch featuring windows at 2 exposures, bead board ceiling, ceiling fan/light fixture, exposed brick, door to Living Room, door to Kitchen, door to backyard
- Powder Room featuring tile flooring, pedestal sink, baseboard molding, semi-flush mount light fixture
- Dining Room featuring original hardwood floors with walnut inlay, original wainscoting, windows at 2 exposures including a bay of windows, decorative crown moldings, baseboard moldings, chandelier, swinging door to Kitchen
- Kitchen featuring tile flooring, custom cabinetry, granite countertops, tile backsplash, stainless sink, Whirlpool stainless refrigerator/freezer, Frigidaire stainless 5 burner oven/range, built in stainless Frigidaire microwave, GE Profile stainless dishwasher, door to Sun Porch, door to Lower Level, flush mount light fixture
- Breakfast Room featuring tile flooring, built in corner China cabinets with open and concealed storage, upper cabinets, oversized windows at 2 exposures, chandelier

## SECOND LEVEL

- Original staircase to Second Level, decorative arched nook
- Second Level Landing featuring original hardwood floors, flush mount light fixture, 2 original Linen Closets with custom storage
- Primary Bedroom Suite featuring original hardwood floors, oversized windows at 2 exposures, Walk In Closet, original built in Vanity/Dressing Area, flush mount light fixture, Bathroom featuring tile flooring, pedestal sink, glass door shower with tile surround, baseboard molding, fan/light, medicine cabinet, 3 light sconce, recessed light in shower
- Bedroom 2 featuring original hardwood floors, oversized windows at 2 exposures, Double Door Closet, baseboard molding, semi-flush mount light fixture
- Bedroom 3 featuring original hardwood floors, oversized windows at 2 exposures, Double Door Closet, baseboard molding, semi-flush mount light fixture
- Full Hall Bath featuring tile flooring, vanity with integrated counter/sink, tub/shower combination with tile surround, fan/light, 2 light sconce, baseboard molding

## LOWER LEVEL

- Unfinished Potential Recreation Room, recessed lighting
- Half Bath featuring original wash basin sink, toilet, medicine cabinet, flush mount light fixture
- Unfinished Potential Mud Room/Exercise/Craft Room, storage closet, utility closet, door to 2 Car Garage
- Laundry Room featuring tile flooring, GE front loader washer and dryer, utility sink, flush mo
- r washer and dryer, utility sink, flush mount light fixture
- 2 car attached garage

## FRONT & BACKYARD

- Front stone curved staircase
- Curved flagstone front walkway
- Brick front stairs
- Enormous side yard

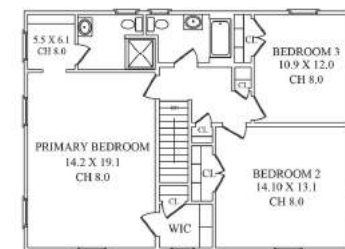
## ADDITIONAL FEATURES & UPGRADES

- Original doors and hardware throughout
- Original plaster walls and ceilings
- Newer garage doors
- Alarm system

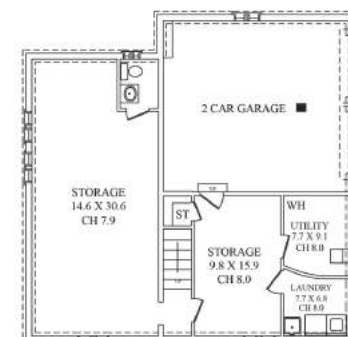
## THE FLOORPLAN



FIRST FLOOR



SECOND FLOOR



LOWER LEVEL

NOT TO SCALE - This floor plan is provided for illustration purposes only.  
Room positions and dimensions are approximate and should be independently measured for accuracy





**sueadler**   
THE #1 KELLER WILLIAMS TEAM IN NEW JERSEY team

CELL: 973.936.9129  
OFFICE: 973.376.0033 x101  
EMAIL: [info@sueadler.com](mailto:info@sueadler.com)  
[sueadler.com/124Norfolk](http://sueadler.com/124Norfolk)

**kw** PREMIERE  
PROPERTIES  
KELLER WILLIAMS