

kw PREMIERE
PROPERTIES
KELLERWILLIAMS

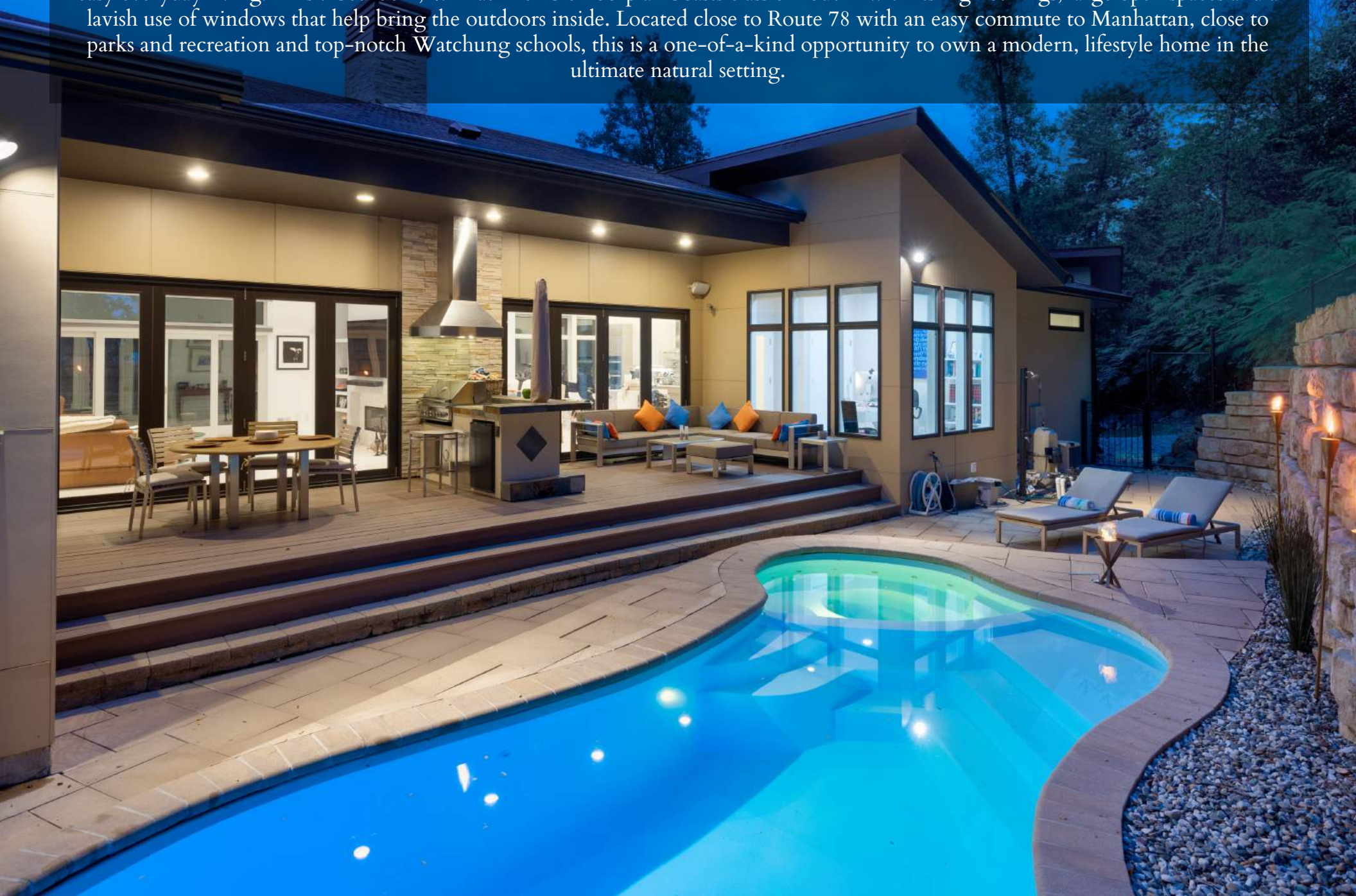
Each Keller Williams office is individually owned and operated.

sueadler 
THE KELLER WILLIAMS TEAM IN NEW JERSEY team



825 JOHNSTON DRIVE
WATCHUNG, NJ

Welcome to extraordinary 825 Johnston Drive, the perfect embodiment of modern architecture, high-end design and “smart” technology! Perched majestically on the high side of Johnston, this home is completely encased in nature with views of the Watchung mountains and seasonal views of New York City. The lifestyle of this home eludes to a sophisticated everyday getaway paired with easy everyday living. This 7 bedroom, 4.1 Bath flexible floorplan boasts classic modern with its high ceilings, large open spaces and a lavish use of windows that help bring the outdoors inside. Located close to Route 78 with an easy commute to Manhattan, close to parks and recreation and top-notch Watchung schools, this is a one-of-a-kind opportunity to own a modern, lifestyle home in the ultimate natural setting.





Drive up to admire the sleek, modern exterior where this incredible home blends seamlessly with the surrounding topography. Enter through oversized double doors into the beautiful 2-story Entry Foyer that simply dazzles. A floating wood staircase, whitewashed hardwood floors, that carry throughout the home, and prolific sunlight from oversized windows all immediately catch your eye. The home is completely set up with “smart” technology to easily control all systems with the touch of a button.





Walk up the floating staircase to the Second Level where you will immediately be taken in by the home's vast living space. Generous open spaces, tremendous windows, and vaulted ceilings allow natural light to glow deep into the heart of the home. The modern European style kitchen aims to impress with modern custom cabinetry in sleek white and a washed wood finish. An oversized island that easily seats 6, high-end Kitchen Aid stainless steel appliances, a Walk-In Pantry, and a wine refrigerator are the best in form and function. The Kitchen opens up to the elegant Dining Room with endless views of the Watchung Mountains and the backyard paradise. Enjoy fireside dining by a sleek two-sided fireplace flanked by chic stacked stone. The Dining Room flows easily into the Living Room that will be the site of endless entertaining. Soaring ceilings, custom shelving and the fireplace all contribute to the warmth and beauty of this room. Whether it's entertaining friends and family or family game night, this room is sure to be the heart of the home.





The indoors and outdoors truly come together with the sliding glass doors and folding glass doors allowing entertaining spaces to connect seamlessly. Need to work from home? Not a problem with a sundrenched Office overlooking the backyard oasis. An ensuite Guest Room/Bedroom 4, with an on-trend Bath, and access to a spectacular Side Deck only adds to the home's appeal. A sleek Powder Room rounds out the Second Level's Living Area.

Of course, another real star of this property is the incredibly private outdoor spaces perfect for entertaining, contemplating your day or just taking in the views. A property of this stature doesn't come along every day. The entertaining opportunities are endless from the numerous decks, easily accessed from multiple rooms, with truly breathtaking views of the Watchung Mountains and New York City (seasonal). Pool party anyone? You will feel like you have been transported to California with the Outdoor Kitchen/Bar, enormous Deck with room for al fresco dining and lounging and the stunning Pool. Whether it's enjoying a drink at the Bar Area, catching up with friends while dining poolside, or soaking in the Pool, you will NEVER want or need to leave.



Ready to retire for the evening? You will be astonished by the Primary Bedroom with soaring ceilings, chic gray accent walls, a fully custom Walk-In Closet, and floor-to-ceiling windows overlooking the gorgeous backyard. The spa-like Primary Bath is worthy of a magazine spread with its sleek designer tile, a custom modern double vanity, soaking tub, and oversized shower. Down the hallway, you'll find two additional sun-drenched and generously sized bedrooms with fully custom closets. Bedrooms 2 and 3 share the on-trend Jack and Jill bath boasting chic designer tile and a custom double vanity. Laundry is an absolute pleasure when there is a Laundry Room right outside of the bedroom area.







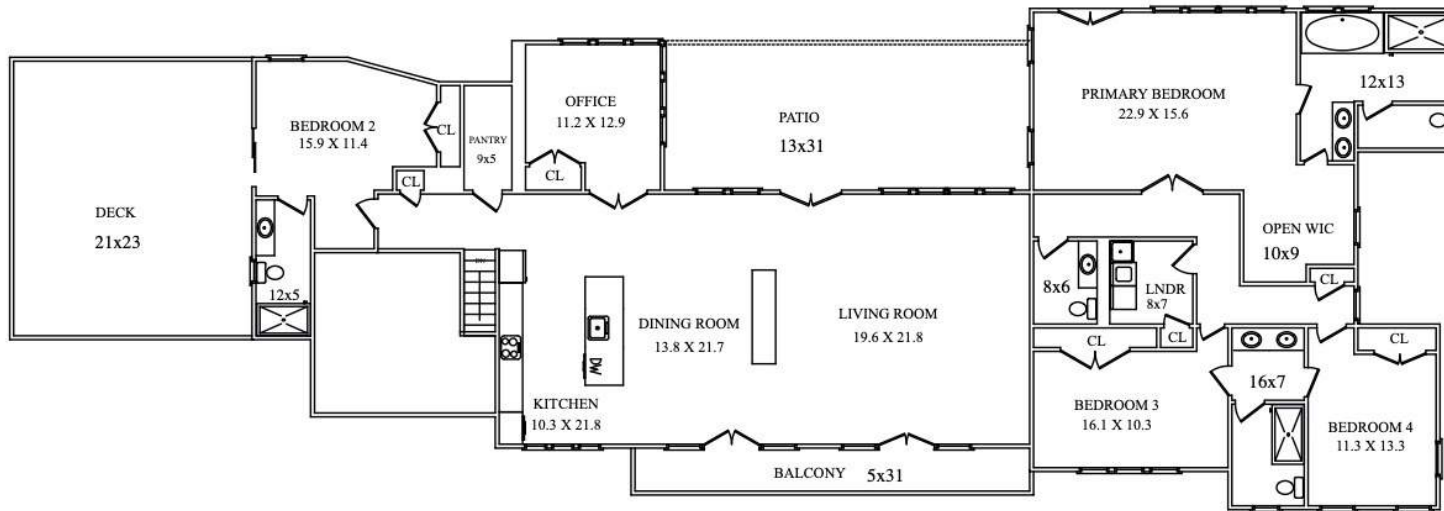
And it doesn't end there. The First Level of the home provides extraordinary, functional living space. Dramatic play, Super Bowl parties or just hanging out with friends will be an absolute delight in the enormous Recreation/Play Room or space for a home office. A sunny and bright Bedroom 5, with two oversized double closets, is the perfect spot for visiting guests or an au pair. A designer Full Bath and Wine Room only add to the First Level's appeal. Staying fit is easy as can be in the spacious and bright Exercise Room (also potential Bedroom 6). Finally, TONS of partially finished space offers plenty of potential for a Media Room, Game Room or additional bedrooms. A 2 Car Garage rounds out the Lower Level. Whether it's movie night, billiards or just hanging with friends, 825 Johnston's Lower Level will satisfy all your entertaining needs.



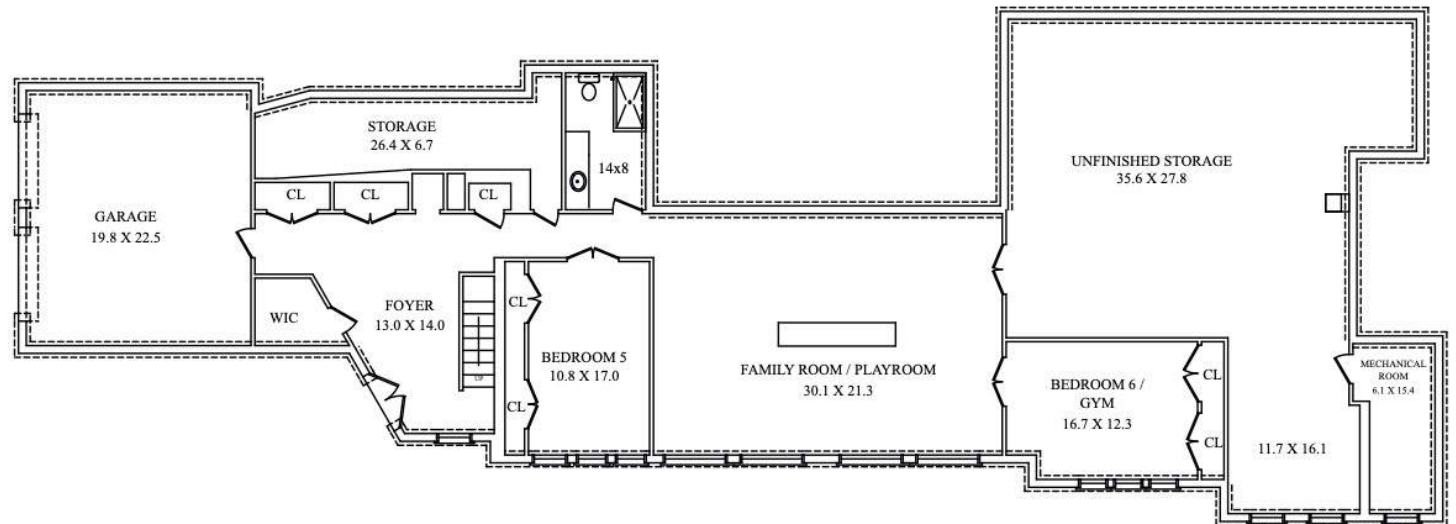
Words truly can't describe how outstanding this home is. This is one of those homes that simply must be seen to be believed!



THE FLOORPLAN



FIRST FLOOR



LOWER LEVEL

NOT TO SCALE - This floor plan is provided for illustration purposes only.
Room positions and dimensions are approximate and should be independently measured for accuracy

INSIDE & OUT

FIRST LEVEL

- Oversized double front doors
- 2-Story Entry Foyer featuring oversized windows, whitewashed hardwood floors, floating wood staircase with wire and metal railing, Coat Closet, chandelier
- Rear Hallway featuring whitewashed hardwood floors, 2 Double Door Storage Closets, Media Closet, door to Garage, flush mount lighting, open shelving
- 2 Car Garage
- Wine Room featuring slate tile floor, recessed lighting, Frigidaire commercial refrigerator/freezer, Eurocave Wine Refrigerator (excluded)
- Full Hall Bathroom featuring tile flooring, custom built in cabinetry with quartz countertop and linen storage, shower with sliding glass door, Kohler toilet, fan, 3 light sconce, recessed lighting
- Bedroom 5 featuring double doors at entry, whitewashed hardwood floors, 2 oversized Double Door Closets, open shelving, recessed lighting, 3 oversized casement windows with custom shades
- Recreation Room featuring whitewashed hardwood floors, open shelving, baseboard molding, recessed lighting, clerestory windows
- Partially Finished Space featuring double doors at entry, huge amount of space that can be converted into media room, additional bedrooms, nanny suite, in-law suite, utilities
- Exercise Room/Bedroom 6 featuring double French doors at entry, whitewashed hardwood floors, 2 oversized Double Door Closets, recessed lighting, 3 oversized casement windows

SECOND LEVEL LIVING AREA

- Ensuite Guest Room/Bedroom 4 featuring whitewashed hardwood floors, high ceiling, oversized Double Door Closet, recessed lighting, oversized window with custom shade, clerestory window, sliding glass door to Side Deck, pocket doors to the Bathroom featuring designer tile flooring, custom modern vanity with quartz countertop, frameless glass door shower with designer tile surround, high ceiling, custom cut mirror, sconce, recessed lighting, elongated vertical window with custom shade
- European Style Gourmet Chef's Kitchen featuring whitewashed hardwood floors, modern custom cabinetry in shiny white and washed wood, waterfall style quartz countertops, mosaic tile backsplash, oversized island with seating for 6, Kitchen Aid stainless refrigerator/freezer,, Kitchen Aid stainless built in microwave and wall oven, Kitchen Aid electric cooktop, Kitchen Aid stainless dishwasher, Kitchen Aid stainless beverage refrigerator, Edgestar Wine Refrigerator, pot filler, Broan stainless hood, oversized vertical windows with custom shades, high ceilings, recessed lighting
- Walk In Pantry with floor to ceiling shelving
- Broom/Supply Closet
- Office featuring double French doors at entry, whitewashed hardwood floors, oversized vertical windows at 2 exposures with custom shades, Double Door Closet, recessed lighting
- Dining Room featuring whitewashed hardwood floors, steep vaulted ceiling, 2 sided fireplace with stacked stone surround, oversized sliding doors with full door sized sidelites to Front Deck, custom shades, chandelier (excluded), recessed lighting, Full Sized Folding Glass Doors out to Rear Deck and Pool
- Living Room featuring whitewashed hardwood floors, vaulted ceiling, 2 sided fireplace with stacked stone surround, oversized sliding doors with full door sized sidelites to Deck, custom shades, recessed lighting, Full Sized Folding Glass Doors out to Rear Deck and Pool, open shelving, clerestory windows
- Powder Room featuring designer tile flooring, modern custom vanity with quartz countertop, custom cut mirror, sconce over sink, Kohler toilet, fan

SECOND LEVEL SLEEPING AREA

- Primary Bedroom Suite featuring double doors at entry, soaring ceiling, gray accent walls, whitewashed hardwood floors, recessed lighting, walls of windows at 2 exposures with custom shades, Double French Doors to Pool Area, Walk In Closet with custom drawers shelving and hanging storage
- Primary Bathroom featuring pocket doors to Walk In Closet and Bedroom, tile flooring, modern style custom double vanity with quartz countertop, built in tub with quartz surround, frameless glass door shower with designer tile surround, handheld and rain showerhead, floating shelves, tile accent wall, separate room for toilet, Kohler toilet, high ceilings, sconces, recessed lighting, oversized windows at 2 exposures with custom shades, fan
- Laundry Room featuring whitewashed hardwood floors, Samsung front loader washer and dryer on stands, utility sink with commercial style fixture, storage closet, recessed lighting
- Bedroom 2 featuring whitewashed hardwood floors, high ceilings, 3 oversized casement windows with custom shades, oversized Double Door Closet with custom drawers, shelving and hanging storage, recessed lighting, door to Jack and Jill Bath
- Jack and Jill Bath featuring pocket doors at entry, designer floor tile, custom modern wall to wall double vanity with quartz countertop, separate room for shower and toilet, built in tub/shower with quartz and tile surround, Kohler toilet, custom cut mirror, sconces, recessed lighting, fan, oversized vertical window with custom shade
- Bedroom 3 featuring whitewashed hardwood floors, high ceilings, 3 oversized casement windows at 2 exposures with custom shades, oversized Double Door Closet with custom drawers, shelving and hanging storage, recessed lighting, door to Jack and Jill Bath
- Rear Hallway with Double Door Linen Closet and oversized window

FRONT/BACKYARD

- Large driveway with 2 additional parking spots
- Lush front lawn with professional landscaping including perennial blooms and grasses, flat area for play at front
- Front Wood Look Deck off of Kitchen, Dining and Family Rooms, overlooking Watchung Mountains, seasonal NYC views
- Side Deck off Guest Room featuring room for lounging, yoga overlooking Watchung Mountains, seasonal NYC views
- Rear Wood Look Deck with dining and conversation areas, recessed lighting, steps to Pool
- Outdoor Kitchen with bar with seating for 4, stone countertop, beverage refrigerator, pull out garbage, Paradise Built In Grill, stainless hood
- Gated Pool Area featuring heated pool, built in spa, stone flooring, stone surround for pool, stone retaining wall, outdoor pool shower
- Irrigation system

ADDITIONAL FEATURES

- “Smart Technology” throughout to control house with touch of a button
- Whole house generator
- Sump Pump/French Drains
- Interior and exterior audio speakers throughout.
- Motorized Dumb waiter
- Heat/AC state-of-the-art systems
- Motorized chandelier



sueadler 
THE #1 KELLER WILLIAMS TEAM IN NEW JERSEY team

CELL: 973.936.9129
OFFICE: 973.376.0033 x101
EMAIL: info@sueadler.com
sueadler.com/825Johnston

kw PREMIER
PROPERTIES
KELLERWILLIAMS.