



77 SPEIR DRIVE  

---

SOUTH ORANGE, NJ





Welcome to 77 Speir Drive built-in 1931 where elegance, architectural details, and amazing craftsmanship will amaze you! This 5 bedroom, 3 full, and 2 ½ bath home is in the desirable Newstead section of South Orange, nestled on the edge of the South Mountain Reservation. This well-maintained home exudes charm and character. As you arrive, you will be greeted by a unique presence and charming architectural design. As you walk up the path and enter through the front door you will find yourself in the spacious entry foyer featuring two coat closets. Flow into the spacious living room which features stunning hardwood floors, a wood-burning fireplace, exposed wood beams, and a charming window seat. The warmth, character, and easy access to the eat-in kitchen make this room perfect for relaxation or movie nights.



The Gourmet Eat-in-Kitchen is sure to impress with stainless steel appliances and a refrigerator you can sync your smartphone to make this kitchen a dream come true. Plenty of cabinet space, crisp cream cabinets, and Calcutta countertops! The breakfast area featuring a spacious coffee bar with crisp white cabinetry, Calcutta marble countertops, glass backsplash, and exposed wood beams and columns complete the heart of the home.





Get ready to host your next dinner party in the sophisticated and bright Dining Room which features beautifully designed original leaded windows. A picture-perfect home office with a bay window overlooking the flat backyard will make working from home a dream. The first level also includes a light and bright powder room. Make your way up the back stairs to find the Guest Suite which is perfectly private and spacious! This bedroom features plenty of closet space, natural light, and a full bathroom. As you come back to the main level, flow back to the foyer for the main staircase of the home.



Ready to retire for the evening? Proceed up the staircase to the hall where you will find 4 bright and spacious bedrooms. Luxury abounds in the Primary Suite complete featuring two spacious walk-in closets with matching brand-new sliding barn doors, plenty of sunlight, and gleaming hardwood floors making this room the perfect retreat. Enjoy the spa-like primary bath that features a spa marble shower, a sink, and a vanity. Three additional bedrooms on this level are steeped in sunlight with beautiful hardwood floors and ample closet space. A tasteful Full Bathroom completes this level.



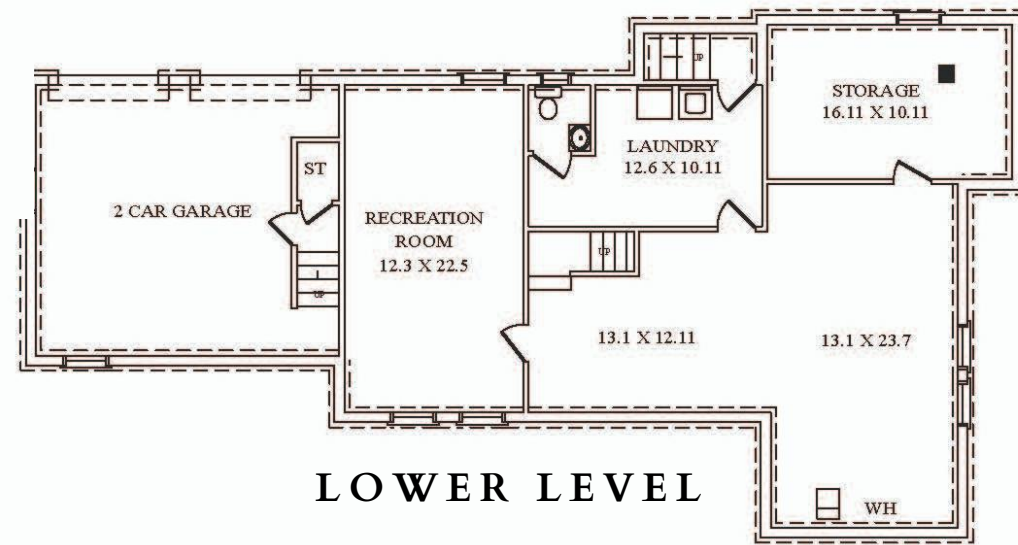
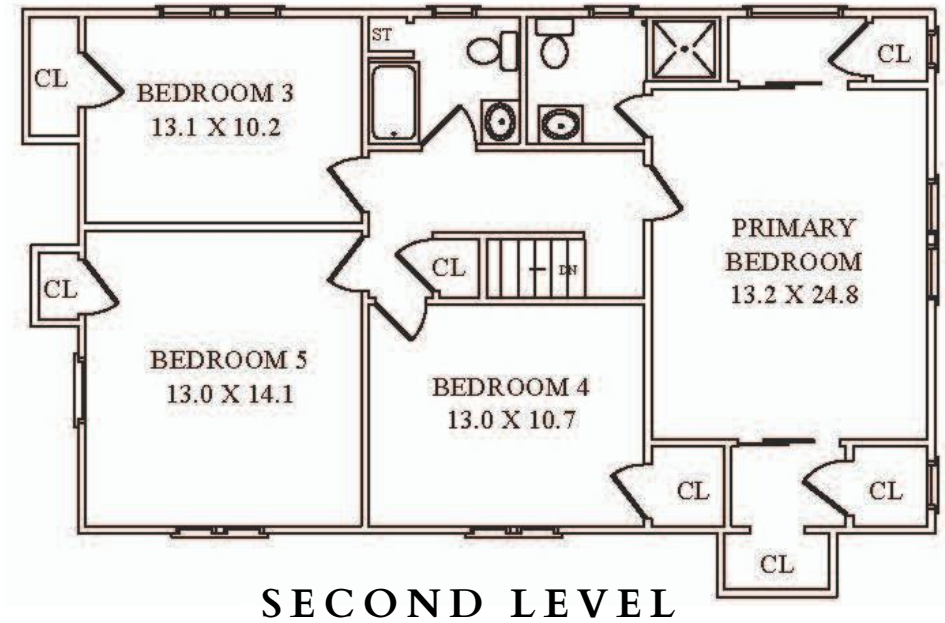
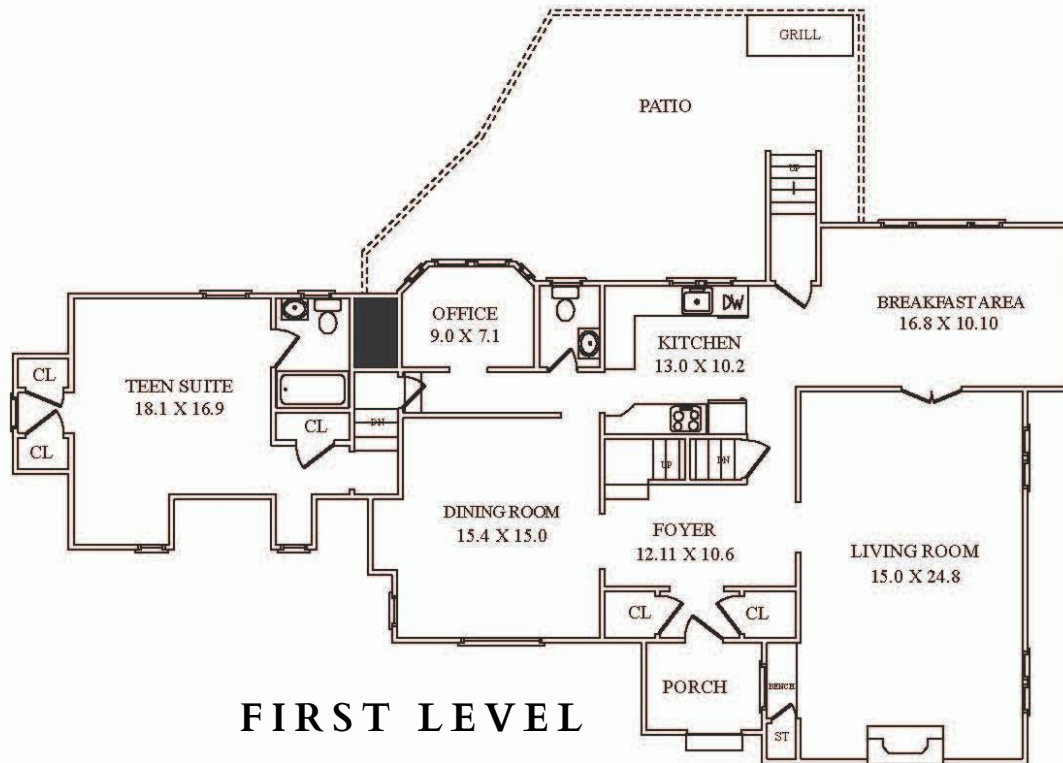




And there's more...The Lower Level, has space for entertaining and a Playroom and is ready for the new owner to put their personal touches on it. There is also a bonus room that is perfect for a home cinema or home gym. The laundry is conveniently located on this floor. Access to the two-car garage can be found on this level and an additional Storage Room. A tasteful Powder Room completes this level.

This beautiful home in desirable South Orange is close to midtown direct, shopping, and restaurants and is not to be missed.

# THE FLOORPLAN



NOT TO SCALE -The floor plan is provided for illustration purposes only. Room positions and dimensions are approximate and should be independently measured for accuracy.



# INSIDE & OUT

## FIRST LEVEL

- Foyer featuring two coat closets, flush mount lighting, hardwood floors, staircase to the main level
- Family Room featuring a wood-burning fireplace, hardwood floors, three windows, one window seat, four sconces for lighting, exposed wood beams, French doors leading to the kitchen, crown molding, baseboard molding
- Kitchen featuring exposed beams, hardwood floors, five windows, two hanging light fixtures, access to the back yard, one coffee bar area with cabinets, Calcutta marble countertops, access to the lower level, Samsung refrigerator with a digital display that can be linked to a smartphone, stainless steel dishwasher, four-burner range and oven, glass tile backsplash, built-in microwave, cream-colored cabinets, butler door to separate the kitchen from the foyer, crown molding, baseboard molding
- Back Foyer featuring flush mount lighting, hardwood floors, access to Home Office and staircase to the fifth bedroom, crown molding, baseboard molding
- Half Bathroom featuring tile floor, pedestal sink, one window, flush mount lighting
- Home Office featuring hardwood floors, bay window with 4 windows, chair rail design, white wainscoting, hanging light, two built-in shelves
- Dining Room featuring hardwood floors, original leaded three windows, flush mount lighting, crown molding, baseboard molding

## SECOND LEVEL

- Foyer featuring hardwood floors, attic access, and linen closet
- Bedroom #1 featuring hardwood floors, two windows, one closet, crown molding, baseboard molding
- Bedroom #2 featuring hardwood floors, one closet, two original leaded windows, two sconces
- Bedroom #3 featuring hardwood floors, three windows (2 are original leaded windows), one closet, two scones
- Master Bedroom featuring five windows, two walk-in closets with sliding barn doors (one has a cedar closet), hardwood floors, two sconces, crown molding, baseboard molding
- Master Bathroom featuring Calcutta marble floor, Calcutta marble tiles in the shower with glass door, one window, one sink with vanity
- Full Hallway Bathroom featuring decorative tile floor, one window, wallpaper, sink and vanity, tub/shower with white subway tiles
- Bedroom #5 (ensuite) can be accessed through a back staircase located by the Home Office. Bedroom featuring hardwood floors, four single closets, three windows. Bathroom featuring tile floors, tub/shower, one window, sink, and vanity, flush mount pull light

## LOWER LEVEL

- Staircase to the lower level
- Large Recreation Room for the owner to put their own touch on
- Bonus room that can be used as a home gym or media room, access to the two-car garage
- Large Storage Room
- Laundry Room featuring washer, dryer, cement floor, Powder Room
- Power Room in Laundry Room featuring one window, sink, cement floor
- Two Car garage featuring three windows, hooks for storage, cement floors

## OUTSIDE

- Mature landscaping in front and back yard
- Annual and Perineal plantings in front and back yard
- Privacy gates with security code to enter and exit driveway
- Fully fenced in backyard
- Shed for extra storage
- Patio
- Outdoor grill and searing station

## UPGRADES

- Outside white trim of house repainted- 2021
- New gutters installed (2017)
- Replaced windows with triple-pane (not including the original leaded windows)
- Custom Sliding Barn Doors for Master Bedroom closet
- Scale Blaster water softener system
- Automatic head coils installed on pipes in the garage to prevent freezing
- French drains and two sump pumps
- Replaced HVAC in attic
- Replaced Forced hot on the second level
- New Patio in backyard and composite stairs and railings

[sueadler.com/77Speir](http://sueadler.com/77Speir)





CELL: 973.936.9129

OFFICE: 973.376.0033 x101

EMAIL: [info@sueadler.com](mailto:info@sueadler.com)

[sueadler.com/77Spir](http://sueadler.com/77Spir)