

7 JOSEPH STREET | CHATHAM, NJ



7 Joseph Street is a dream home in every way. Just minutes from Blue Ribbon schools, Castle Park Playground, NYC transportation, luxury shopping and downtown Chatham, this home cannot be missed!





Crisp white custom wood cabinetry with a gorgeous custom island with seating for 4, marble countertops, a stainless farm sink and top of the line stainless appliances make the Kitchen extraordinary. Mixing cocktails for friends is a dream in the fabulous Butler's Pantry with its own dishwasher, wine refrigerator and so much custom storage so that all your glassware will be neatly tucked away. Take in the backyard view in the Breakfast Area with an oversized French sliding door leading out to the substantial Patio, perfect for al fresco dining or just spending time with friends. Dinner parties are divine in the magnificent Dining Room featuring elegant wainscoting and a stunning chandelier. A lovely Powder Room, a convenient Mud Room and a spacious two car garage round out the First Level.

Drive up the quiet, tree-lined street to view this stunning Like New 6 Bedroom, 4 and ½ Bathroom Custom Colonial, a vision of perfect proportion and detail. Stroll up the paver front walkway and admire the stone and clapboard exterior, covered front entry and a stately front door. Enter the spacious Entry Foyer and prepare to be overwhelmed by the sheer elegance of this home. With gleaming hardwood floors, custom moldings, soothing hues, chic light fixtures and an open floorplan for easy everyday living, this home is the consummate example of high design and function.

As you enter the Entry Foyer, take in the gorgeous views of the Living Room, Dining Room and elegant staircase. Beauty abounds in the gracious Living Room featuring wainscoting, a gorgeous picture window where the light pours in and easy access to the Family Room and Kitchen. Flow easily into the impressive Family Room featuring a stately fireplace with beautiful millwork, coffered ceiling and gorgeous windows with views of the lush backyard. The Family Room connects easily to the impressive Gourmet Chef's Kitchen that will satisfy any cook's desire.





When it's time to retire for the evening, the stately staircase, beaming with natural light, leads you to the second floor with 4 spacious bedrooms and 3 full baths. Luxury abounds in the enormous Zen Master Bedroom Suite drenched in sunlight and with plenty of space for relaxation. The Master Suite Dressing Room is unparalleled in its class. The functionally designed spa-like Master Bathroom dazzles with a chic double vanity, marble countertop, soaking tub and a huge frameless glass shower with rain showerhead. Three additional large-sized bedrooms are steeped in sunlight and include generous double closets. Two additional Full Baths (1 bedroom is ensuite and 1 Jack and Jill) are luxurious and well appointed with custom cabinetry and quartz countertops. Laundry is an absolute pleasure in the conveniently located Second Floor Laundry Room. Walk up the open and airy staircase to find the spectacular Third Level with even more incredible space. Two roomy bedrooms (or use as Office space) and a tasteful bath make this home even better.

And there's more...The Lower Level offers SO MUCH potential for a massive Recreation Room, Exercise Room and/or Wine Cellar. The possibilities are endless!

I N S I D E & O U T

FIRST LEVEL

- Entry Foyer featuring mission style front door, hardwood floors, wainscoting, baseboard molding, crown molding, designer light fixture with drum shade, Coat Closet, staircase to Second Level, door to Lower Level
- Dining Room featuring hardwood floors, wainscoting, picture window, chandelier, crown molding, recessed lighting
- Living Room featuring hardwood floors, wainscoting, recessed lighting, crown molding, picture window, open to Kitchen and Family Room
- Gourmet Chef's Kitchen featuring hardwood floors, white shaker style cabinetry, marble countertops, glass tile backsplash, decorative accent tile backsplash over range, island with seating for 4, recessed lighting, 3 pendant light fixtures over island, pendant light over sink, stainless farm sink, high end stainless appliance package, stainless hood
- Butler's Pantry featuring hardwood floors, custom built in cabinetry including glass door cabinetry, stainless dishwasher, stainless wine refrigerator, stainless bar sink, marble countertops, subway tile backsplash, baseboard molding, crown molding, semi-flush mount light fixture
- Breakfast Room featuring hardwood floors, custom cabinetry, sliding doors out to Patio, chandelier with drum shade, baseboard molding, crown molding
- Family Room featuring hardwood floors, fireplace with custom millwork mantle, coffered ceiling, baseboard molding, recessed lighting, painted soothing hue
- Mudroom featuring hardwood floors, hook storage, Coat Closet, baseboard molding
- Powder Room featuring hardwood floors, vanity with marble countertop, 3 light sconce, baseboard molding
- 2 car Garage with carriage style doors

SECOND LEVEL

- Second Floor Landing featuring hardwood floors, open staircase to Third Level, wainscoting, crown molding
- Master Bedroom Suite featuring double doors at entry, Entry Hallway, hardwood floors, tray ceiling, crown molding, baseboard molding, chandelier with drum shade, recessed lighting, oversized windows with custom window treatments
- Master Dressing Room featuring French doors at entry, hardwood floors, custom built in shelving and hanging storage, custom built in island with drawers and granite countertop, window seat, hanging lantern, recessed lighting
- Master Bathroom featuring floor tile, custom double vanity with marble countertop, built in jacuzzi tub, oversized frameless glass shower with tile surround and rain showerhead, bench, two 3 light sconces over sink, recessed lighting, chandelier, baseboard molding, separate room for toilet
- Laundry Room featuring tile flooring, utility sink, front loader washer and dryer, baseboard molding
- Bedroom #2 featuring hardwood floors, baseboard molding, crown molding, semi-flush mount light fixture with drum shade, double door Closet, door to Jack and Jill Bath
- Ensuite Bedroom #3 featuring hardwood floors, double door Closet, semi-flush mount light fixture with drum shade, baseboard molding, Bathroom featuring tile flooring, vanity with quartz countertop, 2 light sconce, recessed lighting, tub/shower combination with tile surround
- Jack and Jill Bath featuring tile flooring, custom double vanity with quartz countertop, Linen Closet, sconces, recessed lighting, separate room for toilet and tub/shower combinations
- Bedroom #4 featuring hardwood floors, baseboard molding, crown molding, semi-flush mount light fixture with drum shade, double door Closet, door to Jack and Jill Bath

THIRD LEVEL

- Third Floor Landing featuring hardwood floors, hanging lantern, recessed lighting, baseboard molding
- Bedroom #5 featuring vaulted ceiling, hardwood floors, recessed lighting, Walk In Closet, baseboard molding
- Bedroom #6 featuring vaulted ceiling, hardwood floors, recessed lighting, Walk In Closet, baseboard molding
- Full Hall Bath featuring wood look floor tile, double vanity with granite countertop, recessed lighting, separate room for toilet and bath/shower combination

LOWER LEVEL

- Unfinished Lower Level with potential for Recreation Room, Exercise Room and Wine Cellar

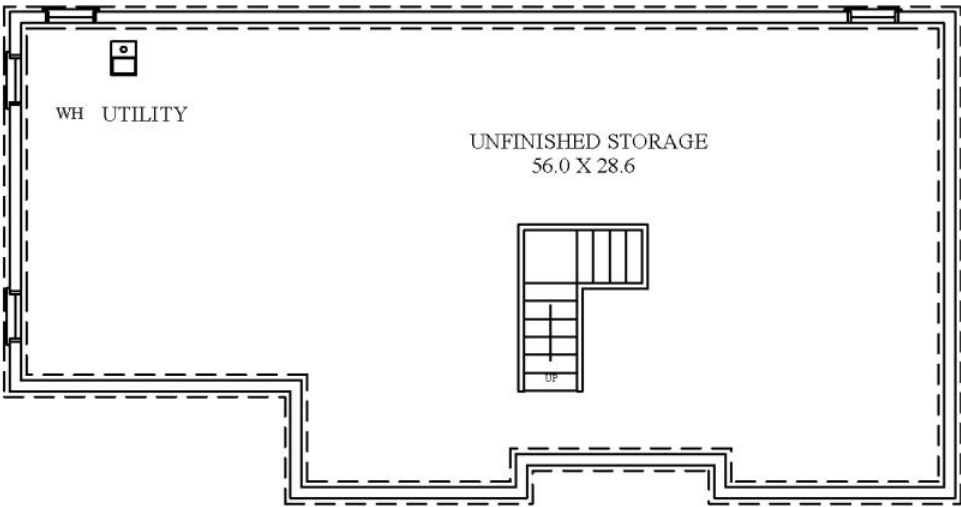
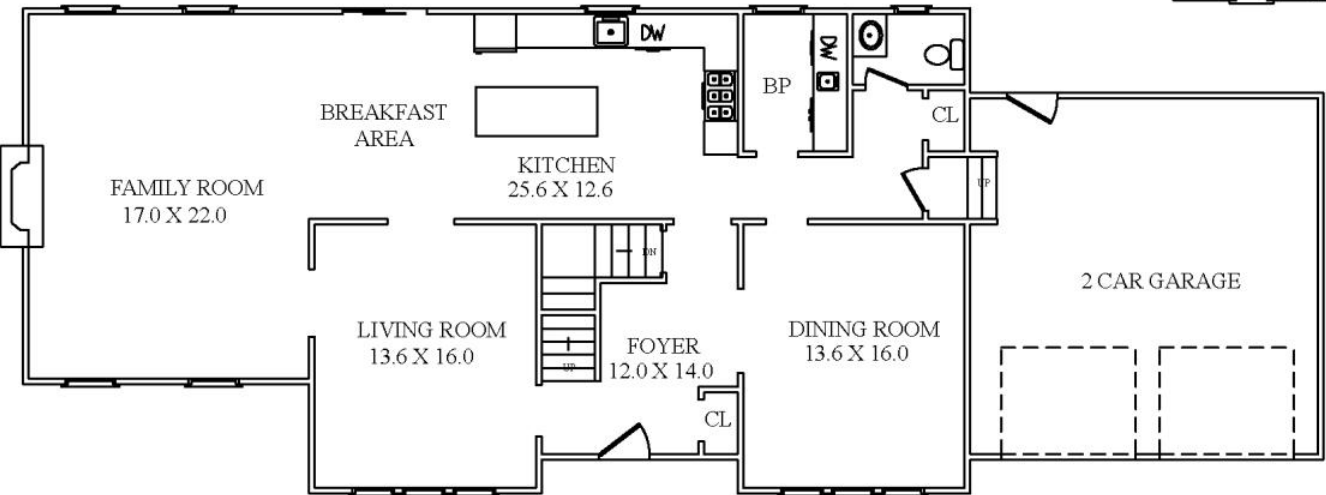
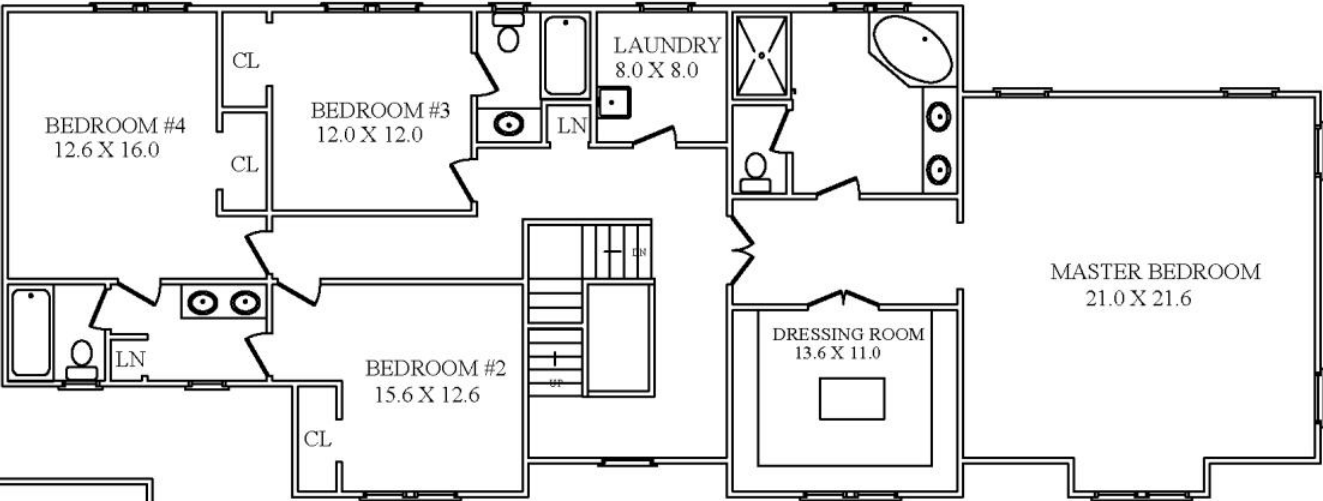
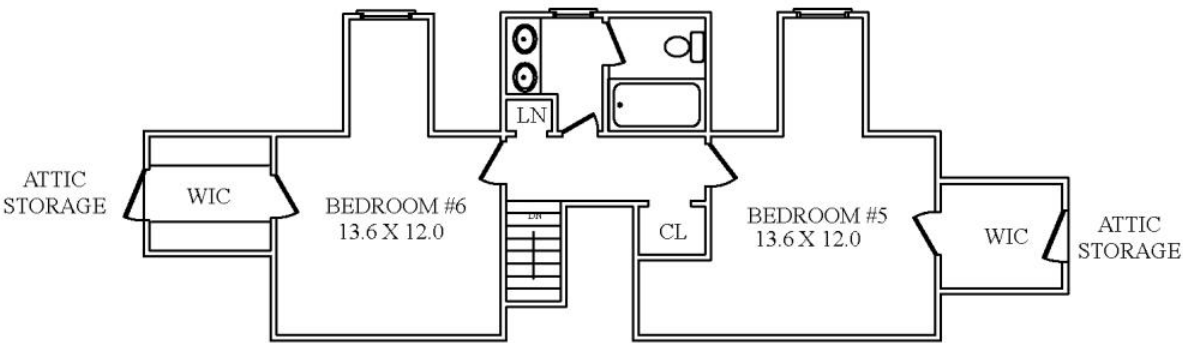
FRONTYARD / BACKYARD

- Covered front entry
- Paver, 2 car wide driveway
- Paver front walkway
- Professional landscaping with foundation plantings, trees and blooming perennials
- Patio
- Flat yard with mature specimen trees





THE FLOORPLAN



NOT TO SCALE - This floor plan is provided for illustration purposes only.
Room positions and dimensions are approximate and should be independently measured for accuracy



CELL: 973.936.9129
OFFICE: 973.376.0033 x101
info@sueadler.com
sueadler.com/7Joseph

