



42 MOUNTAIN AVE | MAPLEWOOD

Welcome to 42 Mountain Avenue! This impeccable, historic Maplewood home checks each and every box. This exquisite 5 Bedroom 3.5 Bath home has been renovated from top to bottom to combine fantastic architectural details with every modern amenity a homeowner could desire. With fabulous flow, exquisite craftsmanship and tasteful finishes throughout, 42 Mountain Avenue is an absolute dream.





Walk up the front walk and take in the incredible curb appeal with neoclassical architectural elements, crisp shutters and clapboard siding. Enter through the original warm wood Entry Door into the elegant Entry Foyer and take in the high ceilings, period moldings and the stunning hardwood floors. Curl up with a cup of tea or a book in the light and bright Living Room with a wood burning fireplace and wall to wall built ins to house all your novels and wares.

The Living Room leads to the dreamy Sun Porch bursting with natural light and leading out the outstanding Patio. Fireside dining is divine in the Formal Dining Room with its original fireplace, an original china cabinet and windows overlooking the tranquil property.





Flow easily from the Dining Room into the spacious and completely renovated Gourmet Kitchen with its custom cherry cabinetry, granite countertops, a Wet Bar and high-end Viking/Sub Zero appliances. A custom designed island with butcher block countertops is the best in form and function. From the Breakfast Area, take in the view of the manicured backyard with copious windows. A fabulous Mudroom with tons of storage and a tasteful Powder Room round out the First Level.









When it's time to retire for the evening, there are two stately staircases to lead you to the Second Level. Luxury abounds in the private and light filled Master Bedroom Suite with its own fireplace, Sitting Room, a Dressing Room with 4 Closets (flexibly being used as an Office) and a charming Balcony which is the perfect spot to unwind after a long day. A well-appointed en suite Bath rounds out the Master Bedroom.



Two additional bedrooms are steeped in sunlight and include generous closets and lovely period details. A large Renovated Full Hall Bathroom with hexagonal and subway tile throughout is sure to please. Convenient Second Floor Laundry rounds out the Second Level. Walk up a few steps to the roomy Third Level which includes spacious Bedrooms 4 and 5 and a chic Full Hall Bath. And there's more...The unfinished Lower Level includes a second Laundry Area and TONS of potential for a Recreation Room, Exercise Room and Wine Cellar.

Equally fantastic as the architectural magnificence of the house is its splendid park-like property. Enjoy complete privacy and tranquility as you take in the blooming perennials, the stone patio, brick paths and a serene Koi Pond. A detached 2 Car Garage with an unfinished basement also has tremendous possibility.



42 Mountain Avenue's architectural integrity and magnificence make it a dream home in every way. Just minutes to Blue Ribbon schools, NYC transportation, Millburn, South Mountain Reservation and Maplewood Village, this is the perfect place to call home.

# I N S I D E & O U T

## FIRST LEVEL

- Entry Foyer featuring original wood door with double pane leaded glass sidelites, hardwood floors, chandelier, deep baseboard moldings, staircase
- Living Room featuring hardwood floors, fireplace with floor to ceiling original mantle with stone surround, wall to wall custom built ins with open, glass door and concealed storage, deep baseboard moldings, decorative deep crown moldings, French door to Sun Room
- All season Sun Room featuring hardwood floors, 2 ceiling fans, oversized windows at 2 exposures, double French doors out to Patio, baseboard molding, crown molding, electric baseboard heat
- Dining Room featuring pocket doors at entry, hardwood floors, fireplace with floor to ceiling original mantle with stone surround, corner China cabinet, chandelier, chair rail, baseboard molding, decorative deep crown molding, swinging door to Kitchen, Closet with floor to ceiling shelving
- Gourmet Chef's Kitchen featuring hardwood floors, custom cherry cabinetry, granite countertops and backsplash, oversized island with butcher block countertop and seating for 2, recessed lighting, chandelier, 3 pendant light fixtures over sink area, custom Desk Area with open and concealed shelving, Viking stainless 6 burner double oven with griddle, Kitchen Aid stainless microwave, Sub Zero fully integrated refrigerator, 2 Sub Zero fully integrated freezer drawers, Shaws farm sink, insta-hot, garbage disposal, fully integrated Miele dishwasher, custom wood hood, rear staircase, crown moldings, baseboard moldings, Breakfast Area
- Wet Bar Area with cabinetry, bar sink, and U-Line Beverage Refrigerator
- Renovated Powder Room featuring hardwood floors, wash basin sink, 2 sconces, Toto toilet, semi-flush mount light fixture

- Mud Room featuring pocket door at entry, door to backyard, hardwood floors, custom cabinetry with cubbies and closed storage, window seat with storage, Coat Closet
- Rear Hallway with custom stained check floor, door to Lower Level

## SECOND LEVEL

- Second Floor Landing featuring hardwood floors, baseboard moldings, window seat with architectural window overlooking rear yard, staircase to Third Level, lantern
- Laundry Closet with stacked washer/dryer
- Master Bedroom featuring hardwood floors, fireplace with custom mantle and brick surround, ceiling fan/light combination, baseboard molding, crown molding, Master Sitting Room with separate entry, semi-flush mount light fixture, door to Front Balcony
- Master Office/Dressing Room featuring hardwood floors, 4 Closets, light/fan combination, French door to 2nd Side Balcony, baseboard molding, crown molding
- Renovated Master Bathroom featuring hexagonal floor tile, Kohler pedestal sink, Kohler toilet, subway tile wainscoting, shower with subway tile surround, Linen Closet, 2 sconces, flush mount light fixture
- Bedroom 2 featuring hardwood floors, ceiling fan/light fixture, Closet, baseboard molding, crown molding
- Renovated Full Hall Bath featuring hexagonal floor tile, vanity with marble countertop, Toto toilet, subway tile wainscoting, tub/shower combination with subway tile surround, 2 light sconce, recessed lighting
- Bedroom 3 featuring hardwood floors, ceiling fan/light fixture, Closet, baseboard molding, crown molding

# I N S I D E & O U T

## THIRD LEVEL

- Landing with window seat
- Bedroom 4 featuring hardwood floors, vaulted ceiling, skylight, 2 Closets, exposed brick, built in bookcase, flush mount light fixture
- Bedroom 5 featuring hardwood floors, vaulted ceiling, Closet, flush mount light fixture
- Renovated Full Hall Bathroom featuring vaulted ceiling, hexagonal floor tile, Kohler pedestal sink, Kohler toilet, subway tile wainscoting, shower with subway tile surround, 2 light sconce, recessed lighting
- Storage area

## LOWER LEVEL

- Unfinished Lower Level
- Laundry
- Potential for Recreation Room, Exercise Room and Wine Cellar
- French drains and 2 sump pumps

## FRONT/BACKYARD

- Spacious corner lot with professional landscaping, blooming perennials and mature specimen trees
- Wood bench
- Cement and brick lined front walkway
- Covered front entry way
- Rear Yard meticulously landscaped with stone paths/sitting areas, lush private hedges bordering Myrtle Avenue
- Trash/storage Utility Area under rear Deck
- Bluestone Patio with half-moon shaped brick and bluestone knee wall
- Gas BBQ grill
- Herb planter

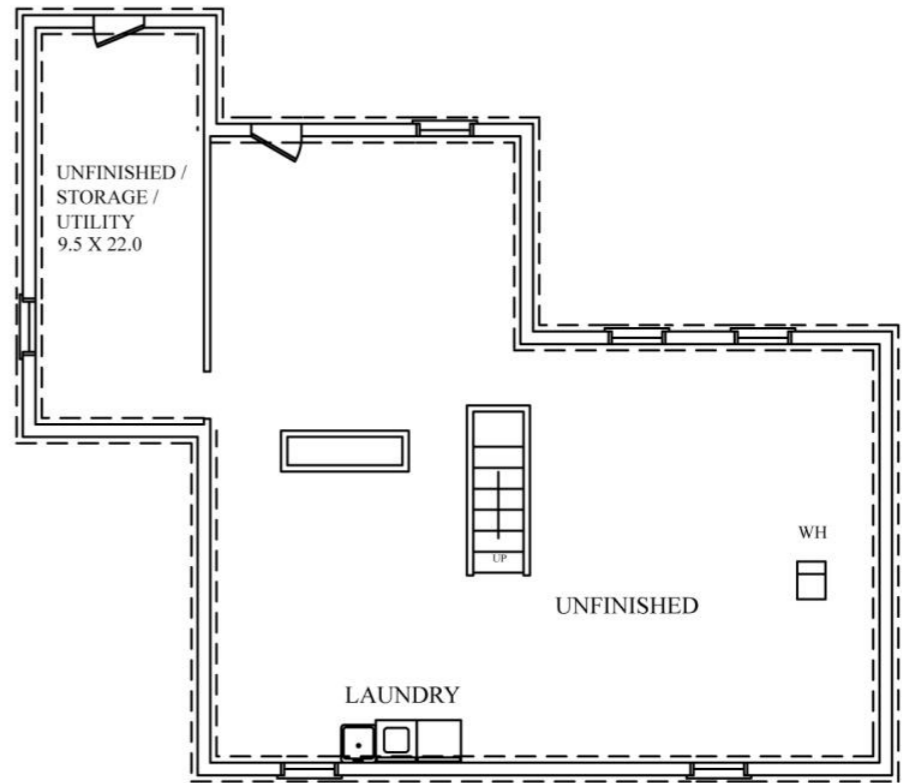
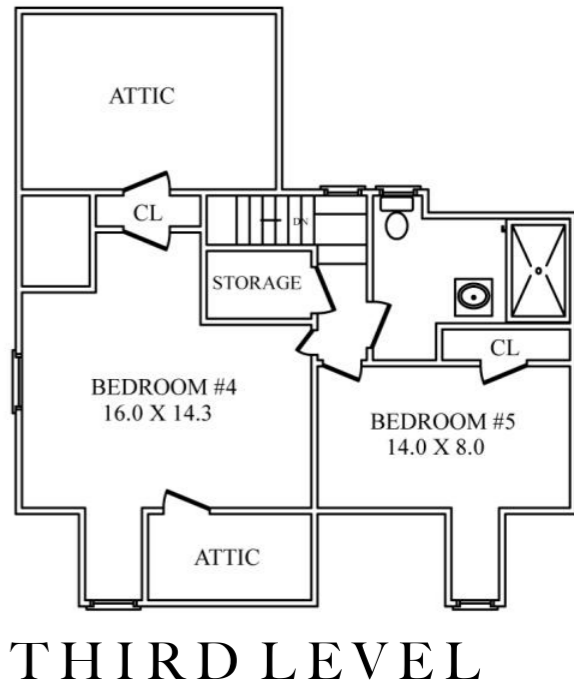
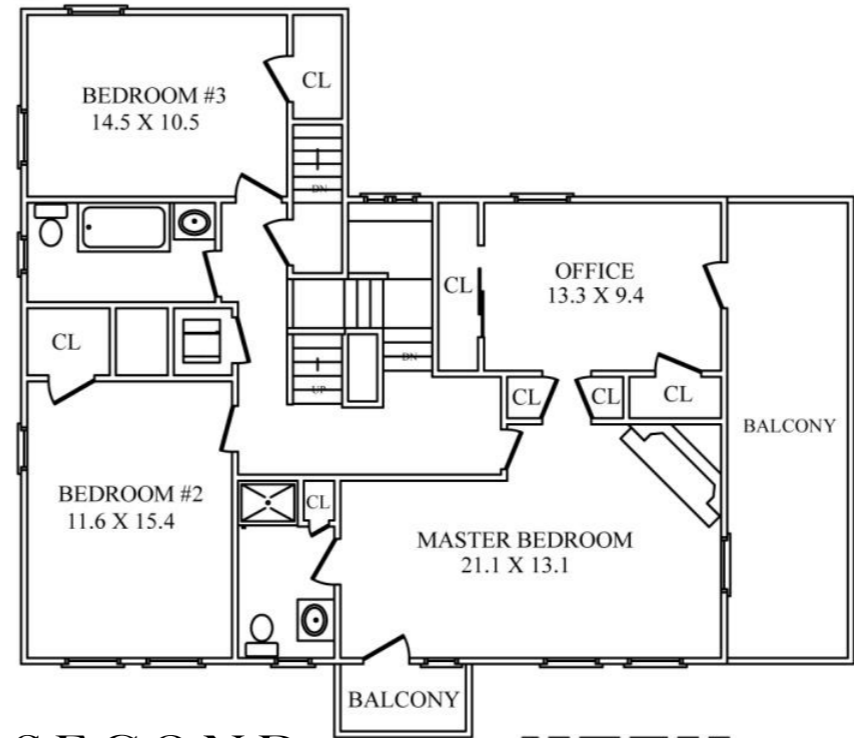
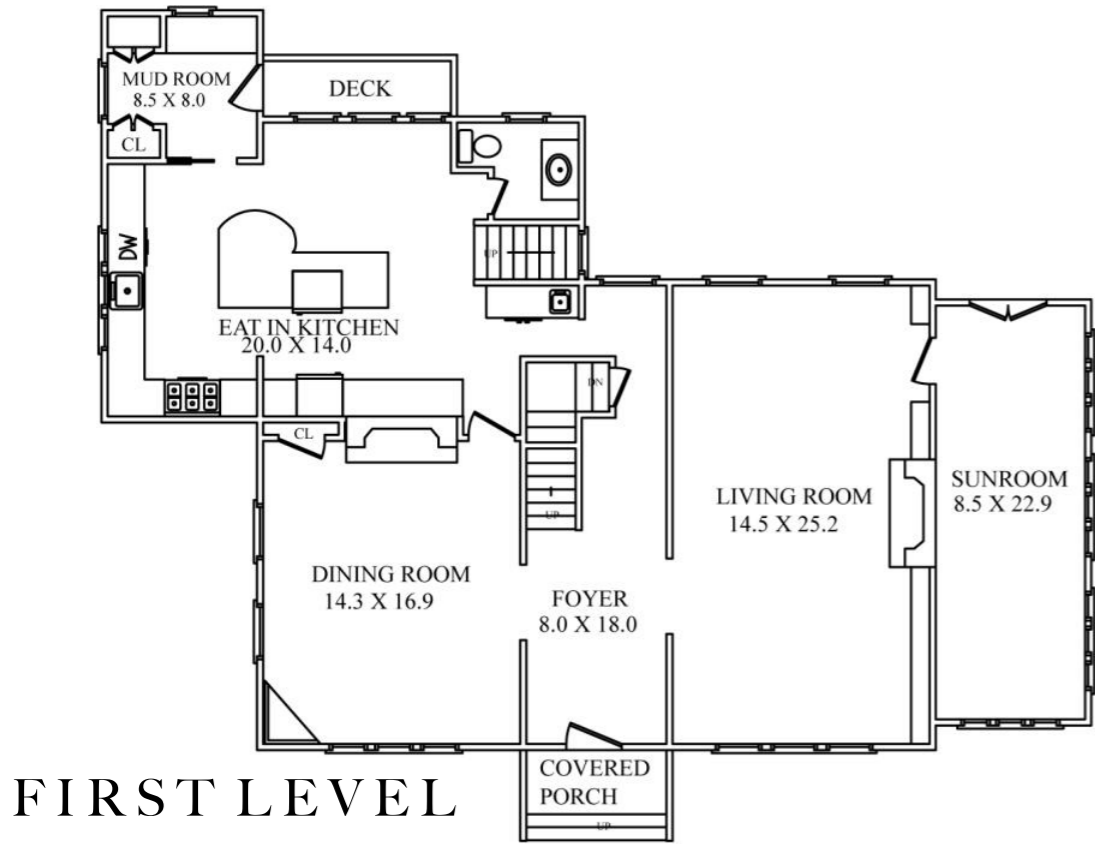
- Flat slate area with 3 level stone lined Koi Pond
- Bluestone/Brick walkway to Garage
- 2 Car Garage with its own unfinished basement and separate entrance
- Irrigation System

## ADDITIONAL FEATURES & UPGRADES

- New Hot Water Heater (2017)
- New Furnace (2019)
- New windows throughout (Pella and Marvin)
- Alarm system
- Oil tank removed
- Radiator/steam heat
- Central AC, 2 units
- Original doors with crystal hardware



# THE FLOORPLAN



NOT TO SCALE - This floor plan is provided for illustration purposes only.  
Room positions and dimensions are approximate and should be independently measured for accuracy

