



29 WHITTREDGE ROAD | SUMMIT









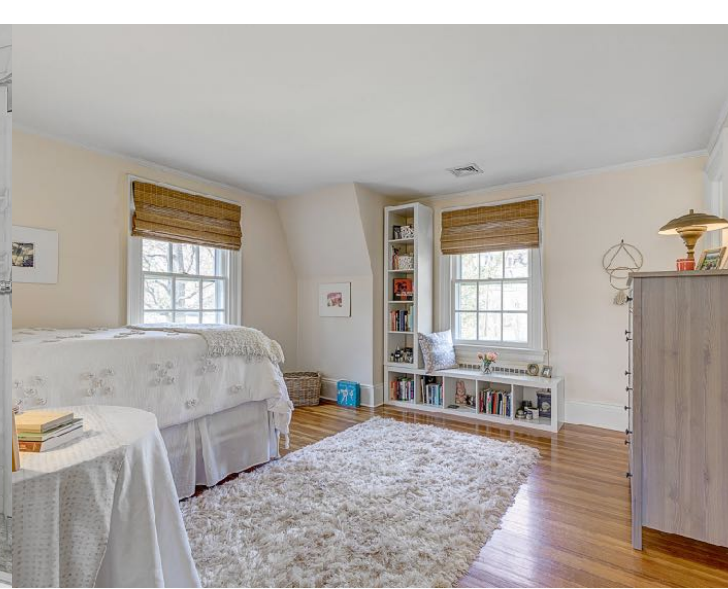
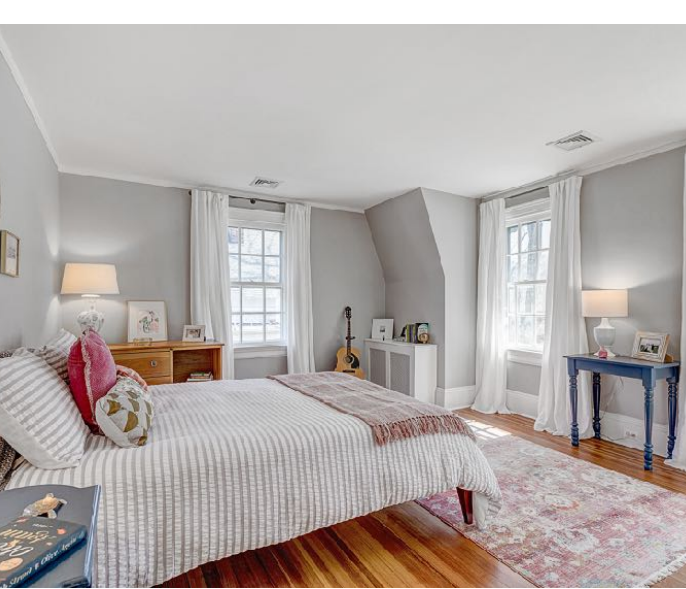
Welcome to 29 Whittredge Road, an extraordinary 5 Bedroom, 4½ Bath Colonial, including a fabulous 1 Bedroom, 1 Bathroom Carriage House with Kitchenette and Open Living Space space over the detached 3 Car Garage. NOT A THING needs to be done to this dream home in Summit's sought after North Side close to Midtown Direct train, fabulous shopping and restaurants and all downtown Summit has to offer.



Drive up to 29 Whittredge Road and you will instantly see that you have arrived somewhere exceptional. A charming blue front door, perfectly landscaped property and classic shutters all contribute to this home's curb appeal. Enter into the warm, welcoming and deep Entry Foyer complete with gleaming hardwood floors and an exquisite staircase leading to the Second Level. The spacious and sundrenched Living Room is an entertainer's dream with its elegant statement fireplace, custom millwork and chic built ins. Flow easily through double French doors to the inviting Office/Sunroom where working from home is an absolute pleasure. An on-trend stone floor, vaulted ceiling and tons of sunlight all add to the warmth of this room. Dinner parties are divine in the Formal Dining Room complete with pocket doors at entry, huge windows and great flow to the Kitchen beyond. It doesn't get better than the picture perfect Gourmet Chef's Kitchen complete with crisp white cabinetry, an oversized 2-tier island, granite and wood countertops and high-end stainless steel appliances. A beautiful Breakfast Room with double French doors to the outdoor Patio makes indoor/outdoor entertaining a breeze. Don't miss the outstanding Family Room that really brings the wow factor. A graceful fireplace, shiplap ceiling and chic woven shades are just a few of the room's hallmarks. A tastefully renovated Powder Room and spacious Mud Room with stunning coffered, glass paned roof round out the First Level.







Ready to retire for the evening? Luxury abounds in the private and open Master Bedroom Suite with soothing hues, a custom built headboard/room divider, a built in window seat and huge two Double Door Closets. The spa-like Master Bathroom is sure to be your favorite retreat. Crisp white subway tile, an oversized shower and a soothing gray custom double vanity are the best in form and function. Bedrooms #2 through #4 are steeped in sunlight and include generous closets (2 Walk In) and large windows. Bedrooms #2 and #3 share the tastefully renovated Jack and Jill Bath. Bedroom #4 is ensuite with refined tile choices, a large shower and a crisp pedestal sink.

And that's not all! The unfinished Lower Level, with Laundry and tons of storage space, also offers plenty of potential for a Recreation Room, Children's Playroom and/or Exercise Room.

Another show stopper of 29 Whittredge is the backyard oasis featuring tons of room to spread out and entertain. A stunning Carriage House features a 3 Car Garage a fabulous 1 Bedroom, 1 Bathroom living area, perfect for visitors, an Au Pair, an office - the options are endless! An open space with a perfect kitchenette and breakfast bar, vaulted ceilings, tons of windows and soothing gray hues make this hideaway sublime. Outside, the Bluestone Patio and outstanding flat, park-like property are the perfect locales for al fresco dining, cocktails with friends and children's play.

With its prestigious neighborhood, close proximity to Midtown Direct train, top-notch schools and convenience to fantastic shopping and restaurants, 29 Whittredge cannot be missed!





I N S I D E & O U T

FIRST LEVEL

- Entry Vestibule featuring original limestone tile, wainscoting, crown molding, painted soothing hue, flush mount light fixture
- Front to back Entry Foyer featuring hardwood floors, wainscoting, crown molding, elegant staircase to Second Level
- Living Room featuring pocket doors at entry, hardwood floors, fireplace with custom millwork mantle and limestone surround, custom built ins with open and concealed storage and designer wallpaper backing, oversized windows, baseboard molding, crown molding, painting neutral hue, double French doors to Office
- Office/Sunroom featuring stone flooring with radiant heat, vaulted ceiling, oversized windows, baseboard molding, crown molding
- Dining Room featuring pocket doors at entry, hardwood floors, sconces, baseboard molding, crown molding, oversized windows
- Chef's Kitchen featuring hardwood floors with radiant heat, custom wood cabinetry including glass door backsplash, oversized 2-tier island with granite and wood countertops, GE Profile cooktop, Marvel beverage refrigerator, stainless KitchenAid double wall ovens, KitchenAid stainless dishwasher, KitchenAid oversized stainless refrigerator/freezer, recessed lighting, open shelving, crown molding, baseboard molding, painted neutral hue
- Breakfast Area featuring hardwood floors radiant heat, chandelier, recessed lighting, oversized windows with shutters, double French doors to outdoor Patio, woven shades

- Family Room open to Kitchen featuring hardwood floors, fireplace with floor to ceiling custom millwork mantle and tile surround and stove, custom built ins with storage, shiplap ceiling, original decorative incinerator, recessed lighting, oversized windows with woven shades, painted neutral hue, original swing door into Dining Room
- Powder Room featuring penny floor tile, subway tile wainscoting, wash basin sink
- Mud Room featuring radiant heat stone flooring, coffered ceiling with glass panes, storage, rear staircase to 2nd level and door to backyard

SECOND LEVEL

- 2nd Floor landing with built in bookshelf, linen closet, laundry closet (potential area for 2nd floor Laundry), hardwood flooring, wainscoting, baseboard and crown molding
- Master Bedroom featuring hardwood floors, custom built in window seat with storage, custom board and batten room divider/headboard, oversized windows with woven shades, recessed lighting, baseboard molding, crown molding, 2 sets of Double French Door Closets with built ins, Walk in Closet with custom built ins
- Master Bathroom featuring marble penny floor tile with radiant heat, soothing gray custom double vanity with tons of storage and marble countertop, vaulted ceiling, oversized frameless glass door shower with rain and handheld showerheads, subway tile throughout, raised moldings throughout, sconces, woven shade
- Bedroom #2 featuring hardwood floors, Closet, oversized windows at 2

- exposures with woven shades, baseboard molding, crown molding
- Jack and Jill Bathroom featuring floor tile, vanity with porcelain countertop, tile wainscoting with decorative border, shower over tub with frameless glass, recessed lighting
- Bedroom #3 featuring hardwood floors, Walk In Closet with built in dresser and attic access via pull down stairs, oversized windows at 2 exposures, baseboard molding, crown molding
- Ensuite Bedroom #4 featuring Walk In Closet, oversized windows at 2 exposures, baseboard molding, crown molding, painted soothing gray, Bathroom featuring mosaic floor tile, frameless glass door shower, pedestal sink, subway tile wainscoting, glass shelf, medicine closet, painted soothing gray

LOWER LEVEL

- Unfinished Lower Level with potential for Recreation Room, Exercise Room, Play Room, etc.
- Laundry Area with double utility sink

CARRIAGE HOUSE

- Heated 3 Car Garage with carriage style doors, storage area, utility sink, storage closet
- 2nd level Living Space featuring hardwood floors, Bar Area/Kitchenette with custom cabinetry, marble countertop, island with built in storage below, sink, stainless steel mini refrigerator pendant lighting, Recreation Room Area and Home Gym Area, Home Office Area, recessed lighting, baseboard moldings, crown molding, painted soothing gray, Double Door Closet with built ins,

walk in closet with custom built in shelving and storage

- Bedroom featuring hardwood floors, oversized windows at 2 exposures, baseboard molding, crown molding, closet, painted soothing hue, sconces
- Full Hall Bathroom featuring penny floor tile, bead board wainscoting, claw foot tub/shower, pedestal sink, sconce and chandelier

FRONT/BACKYARD

- Natural stone wall entry along oversized driveway with seasonal plantings
- Bluestone front walkway flanked by meticulous landscaping
- Rear Bluestone Patio
- Flat grassy rear yard with professional landscaping

ADDITIONAL FEATURES /UPGRADES

- Driveway resurfaced (2019)
- Garage door replacement (2019)
- Kitchen appliances (2017/2018)
- Updated HVAC/Radiant Heat System (2016)
- Roof replacement (2015)
- Master Bathroom renovation with radiant heat floor (2014/2015)
- Original doors and hardware elements throughout
- Original hardwood floors throughout house (less Family Room/Kitchen and Master Bedroom additions)
- Master Bedroom/Bathroom, Family Room and Kitchen Addition (1996/1997)

THE FLOORPLAN

