

26 SCENERY HILL DRIVE | CHATHAM, NJ

sueadler 
THE #1 KELLER WILLIAMS TEAM IN NEW JERSEY team

kw PREMIER
PROPERTIES
KELLERWILLIAMS.

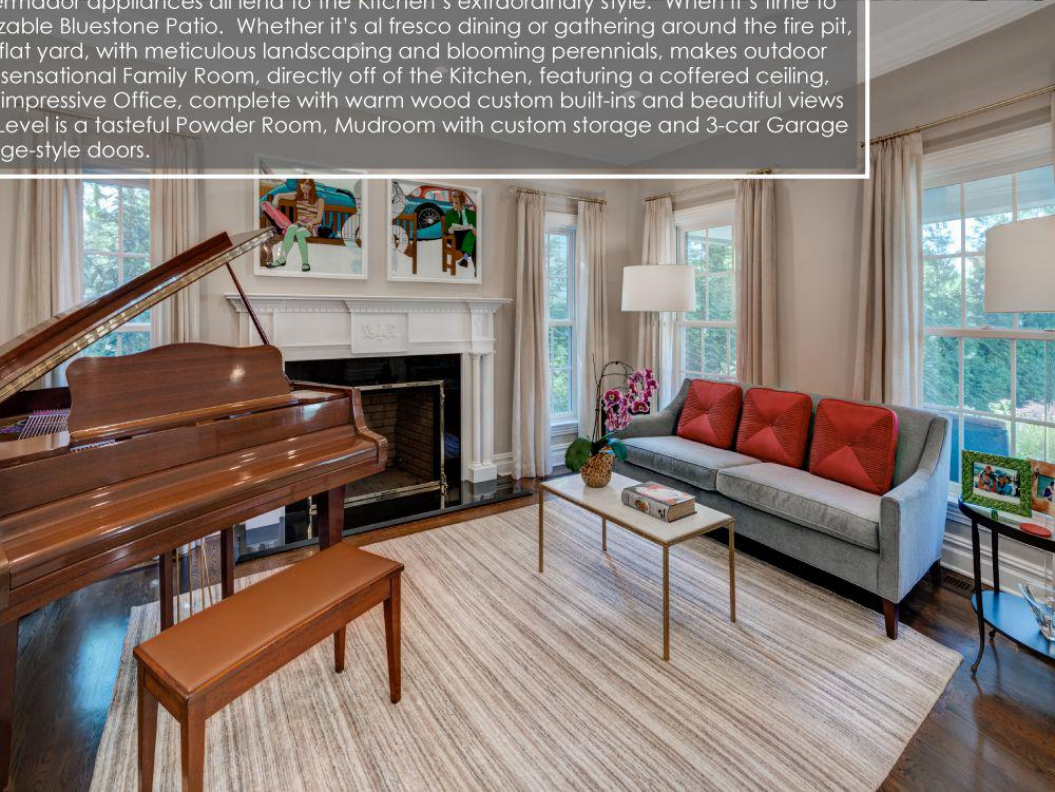
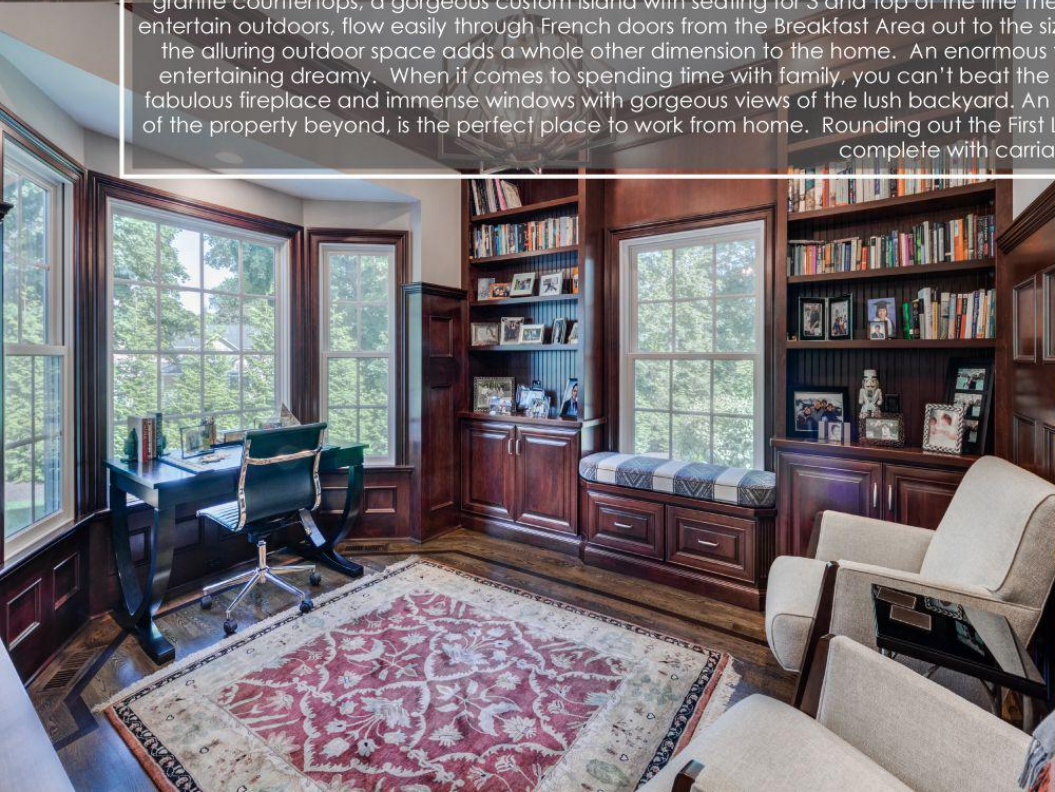
Each Keller Williams office is individually owned and operated.

Drive up to 26 Scenery Hill Drive, situated beautifully on an ultra-private cul de sac, and prepare to be overwhelmed by this home's incredible blend of design perfection and top of the line craftsmanship. It doesn't get better than this Like New home in Chatham's sought after Rolling Hill neighborhood. This perfectly designed 6 Bedroom, 5 ½ Bath home is a vision of perfect proportion and detail.





Stroll up the front walkway to the stunning front porch perfect for rocking chairs and lemonade. Enter through the impressive Entry Door graced by 18" sidelites and an arched transom. The elegant, deep moldings and stunning hardwood floors with walnut inlay are just a few of the magnificent details that grab your attention. The sheer elegance of the inviting Entry Foyer, with views of the Living Room and Dining Room, tell you that you have arrived somewhere special. Beauty and sunlight abound in the gracious Living Room featuring cultivated details such as the fireplace with custom millwork and elongated windows. Dinner parties are divine in the magnificent Dining Room featuring high ceilings with deep crown molding and wainscoting. An adjacent Butler's Pantry is the perfect spot for mixing cocktails with its own beverage refrigerator, custom cabinetry and granite countertops. Flow easily into the dazzling Gourmet Chef's Kitchen that will satisfy any cook's desire. Crisp custom cabinetry, granite countertops, a gorgeous custom island with seating for 3 and top of the line Thermador appliances all lend to the Kitchen's extraordinary style. When it's time to entertain outdoors, flow easily through French doors from the Breakfast Area out to the sizable Bluestone Patio. Whether it's al fresco dining or gathering around the fire pit, the alluring outdoor space adds a whole other dimension to the home. An enormous flat yard, with meticulous landscaping and blooming perennials, makes outdoor entertaining dreamy. When it comes to spending time with family, you can't beat the sensational Family Room, directly off of the Kitchen, featuring a coffered ceiling, fabulous fireplace and immense windows with gorgeous views of the lush backyard. An impressive Office, complete with warm wood custom built-ins and beautiful views of the property beyond, is the perfect place to work from home. Rounding out the First Level is a tasteful Powder Room, Mudroom with custom storage and 3-car Garage complete with carriage-style doors.





When it's time to retire for the evening, two stately staircases, beaming with natural light, lead you to the second floor with 5 spacious bedrooms and 4 full baths. The immensely private and spacious Master Bedroom Suite exudes comfort and relaxation with an architectural vaulted ceiling, fireplace, outstanding craftsmanship and a roomy dressing room perfect for getting ready. The Master Suite is also functionally designed with a stellar Walk-In Closet with custom drawers, hanging storage and adjustable shelving. You won't want to leave the spa-like Master Bathroom, complete with custom cabinetry, marble countertops and built-in Jacuzzi tub. 4 additional large-sized bedrooms (2 are ensuite, 2 others share a bath) are steeped in sunlight and include generous fully custom closets and chic baths. Laundry is a pleasure in the upscale Second Floor Laundry Room with custom built-in cabinetry and tons of storage space.

And there's more...The Lower Level, with its fantastic Recreation Room with custom Kitchen means your home will be the best place for friends to gather to watch sporting events. A large Guest Bedroom Suite (perfect for houseguests or an au pair) just adds to the Lower Level's appeal. A roomy Exercise Room and tons of storage space round out the Lower Level. Whether it's movie watching, yoga, card games or children's art projects, the Lower Level provides all the space you need for any entertainment pursuit. Looking to expand? Look no further than the tremendous Third Level. Tons of unfinished space, completely framed out, has the potential for more bedrooms and/or recreational space.



I N S I D E + O U T

FIRST LEVEL

- Front Porch with bluestone flooring, bead board ceiling, architectural pillars and arched entryway, outdoor lanterns
- Front Door with sidelites and transom
- Entry Foyer featuring herringbone pattern hardwood floors with walnut inlay, wainscoting, deep crown molding, baseboard molding, designer light fixture, staircase to second level, door to basement at rear hallway
- Powder Room featuring marble tile flooring, pedestal sink, bead board wainscoting, 3 light sconce, deep crown and baseboard moldings, built in custom cabinetry over toilet, Toto toilet
- Living Room featuring hardwood floors with walnut inlay, fireplace with custom millwork mantle and stone surround, deep crown molding, baseboard molding, elongated windows, recessed lighting, in-ceiling speakers
- Dining Room featuring hardwood floors with walnut inlay, deep crown molding, baseboard molding, elongated windows, recessed lighting, wainscoting, in-ceiling speakers
- Butler's Pantry featuring hardwood floors, custom cabinetry including cabinetry with glass door fronts for bar glass display, wet bar with stainless sink and disposal, granite countertops, subway tile backsplash, recessed lighting, wainscoting, beverage refrigerator, dishwasher
- Gourmet Chef's Kitchen featuring hardwood floors, custom wood cabinetry, granite countertops, subway tile backsplash, stainless sink with commercial-style fixture, oversized island with granite countertop and seating for 3, Thermador dishwasher, Thermador 6 burner stainless oven/range, Thermador stainless built-in microwave, Thermador stainless built in wall oven, and warming drawer, Thermador full sized refrigerator and freezer, recessed lighting, pendant lighting over island, deep crown molding, custom built in desk area with concealed storage and file drawer
- Breakfast Room featuring hardwood floors, double French doors flanked by floor to ceiling windows and transom out to bluestone patio
- Family Room featuring hardwood floors, oversized fireplace with floor to ceiling custom millwork mantle and marble surround, new gas log set, coffered ceiling, recessed lighting, in-ceiling speakers, baseboard molding, oversized windows overlooking lush yard
- Office featuring hardwood floors, custom walnut moldings and wainscoting, built in upholstered window seat, bay window, custom built ins with open and concealed storage, recessed lighting
- Mud Room featuring slate flooring, custom built in cubbies and concealed storage, bead board wainscoting, recessed lighting, door to garage, door to side yard, rear staircase to upper and lower levels, deep crown moldings
- 3 car garage with custom built-in storage and electric carriage style doors

SECOND LEVEL

- Staircase to second level featuring wainscoting, landing featuring architectural window with sidelites
- Second Floor Landing featuring hardwood floors, flush mount light fixture, recessed lighting, double door linen closet with floor to ceiling shelving
- Master Bedroom Suite featuring double doors at entry, hardwood floors, fireplace with custom millwork mantle, vaulted ceiling, recessed lighting, in ceiling speakers, oversized picture window overlooking lush yard, mounted flat screen TV with Apple TV, Blu-Ray and Sonos
- Master Dressing Room featuring hardwood floors, built in vanity with granite countertop and storage, recessed lighting, floor to ceiling custom built ins
- Master Bathroom featuring double doors at entry, marble floor tile, 2 custom wood vanities with marble countertops, custom mirrors, shower with designer tile surround and frameless glass door, custom built in jacuzzi tub with tile surround, separate room for toilet, Toto toilet, two 3-light sconces, recessed lighting, mounted flat screen TV
- Master Walk In Closet featuring hardwood floors, custom island with granite countertop, custom adjustable storage throughout with shoe shelves, drawers and hanging storage, 2 flush mount light fixtures
- Ensuite Bedroom #2 featuring hardwood floors, deep crown and baseboard moldings, recessed lighting, Walk In Closet with custom adjustable shelving and hanging storage, Bathroom featuring custom wood vanity with marble countertop, custom built-in mirror, shower over tub with sliding glass door and tile surround (including decorative mosaic accent tile), 3 light sconce
- Ensuite Bedroom #3 featuring hardwood floors, deep crown and baseboard moldings, recessed lighting, Walk In Closet with custom adjustable shelving and hanging storage, custom bookcase, Bathroom featuring custom wood vanity with marble countertop, custom built-in mirror, shower with sliding glass door and tile surround (including decorative mosaic accent tile), 3 light sconce, recessed light in shower, Toto toilet
- Laundry Room featuring tile flooring, custom built ins with Elkay sink and upper and lower storage, granite countertop, LG top loader washer and LG front loader dryer (new May 2014), Closet with floor to ceiling shelving, 2nd Closet with hanging storage, recessed lighting, deep crown and baseboard moldings
- Bedroom #4 featuring hardwood floors, deep crown and baseboard moldings, recessed lighting, double door Closet with custom adjustable shelving and hanging storage
- Jack and Jill Bathroom shared with Bedrooms #4 and #5 featuring tile flooring, double custom wood vanity with marble countertop, custom built-in mirror, shower with sliding glass door and marble tile surround (including decorative mosaic accent tile), two 2-light sconces, recessed light in shower, window shades, linen closet with floor to ceiling shelving, Toto toilet
- Bedroom #5 featuring hardwood floors, deep crown and baseboard moldings, recessed lighting, double door Closet with custom adjustable shelving and hanging storage

LOWER LEVEL

- Wood staircase with bead board wainscoting, 2 light sconce
- Recreation Room featuring high-end wood look flooring, bead board wainscoting, recessed lighting
- Kitchenette featuring high-end wood look flooring, built in custom cabinetry, granite countertops, subway tile backsplash, stainless Elkay bar sink with commercial style fixture, Kitchen Aid stainless refrigerator/freezer, built-in GE stainless microwave, storage closet with floor to ceiling shelving
- Full Bathroom featuring tile flooring, custom wood vanity with marble countertop, custom built-in mirror, Toto toilet, Shower with sliding glass door and tile surround (including decorative mosaic accent tile), 2 light sconce, recessed light in shower
- Back Area featuring high-end wood look flooring, bead board wainscoting, area for hanging storage with hooks, recessed lighting, utility closet, coat closet with double doors, back staircase
- Exercise Room featuring high-end wood look flooring, bead board wainscoting, recessed lighting, double door closet with custom adjustable storage and shelving, utility closet
- Guest Room/Bedroom #6 featuring high-end wood look laminate flooring, bead board wainscoting, recessed lighting, 2 double door closets with custom adjustable storage and shelving, 2 utility closets
- Finished Storage Room featuring high-end wood look laminate flooring, bead board wainscoting, recessed lighting, closet with floor to ceiling shelving
- Sump pumps

THIRD LEVEL

- Wood staircase to 3rd level, 2 light sconce
- Unfinished space, fully framed, potential for additional bedroom, bathroom, and recreational space

BACKYARD

- Bluestone patio and bluestone walkway, outdoor lanterns
- Fully fenced in, flat yard
- Meticulously landscaped with blooming perennials and 3 walls of privacy trees
- Drip irrigation under trees surrounding property
- Outdoor speakers

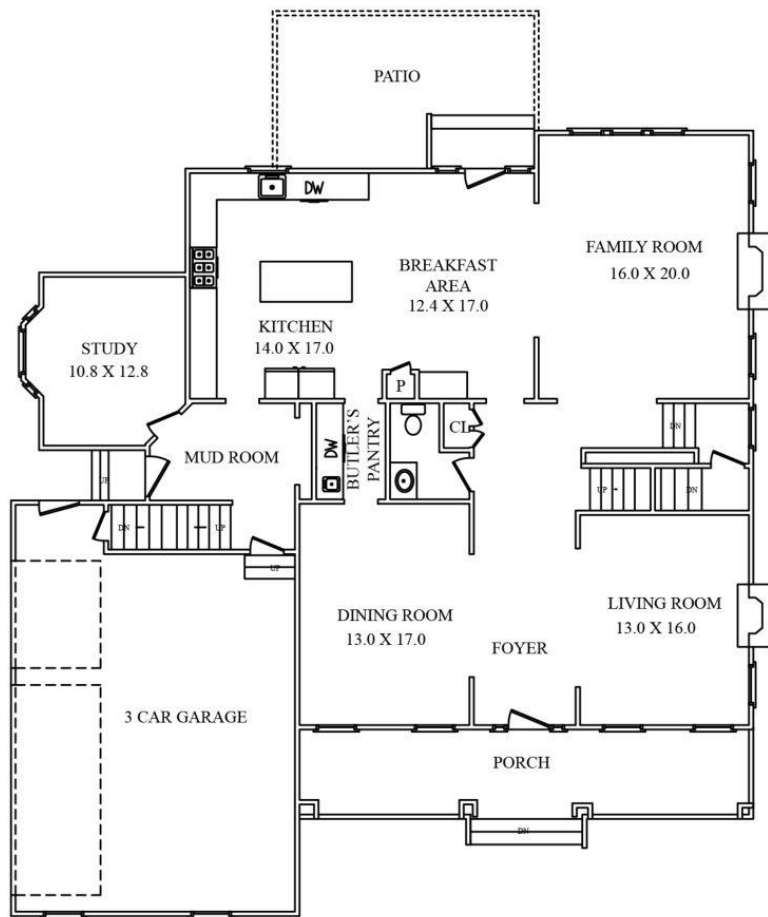
ADDITIONAL FEATURES + UPGRADES

- Maintenance free siding
- Kohler 48kw Whole House Generator
- Hardwood floors stained darker tone
- Whole Interior freshly painted
- Lower Level Kitchenette cabinetry freshly painted (neutral gray) and maintenance free flooring
- Top Down/Bottom Up Cell Shades in every bedroom and bathroom
- Powder Room with custom cabinetry matching Kitchen
- Aluminum fence surrounding property
- Dimmer switches in Living Room, Dining Room, Family Room and Kitchen chandelier
- Custom cabinets in garage
- Sealed driveway

26 Scenery Hill is a dream home in every way. Just minutes from Blue Ribbon schools, NYC transportation, shopping and restaurants in Chatham and Madison, this home cannot be missed!



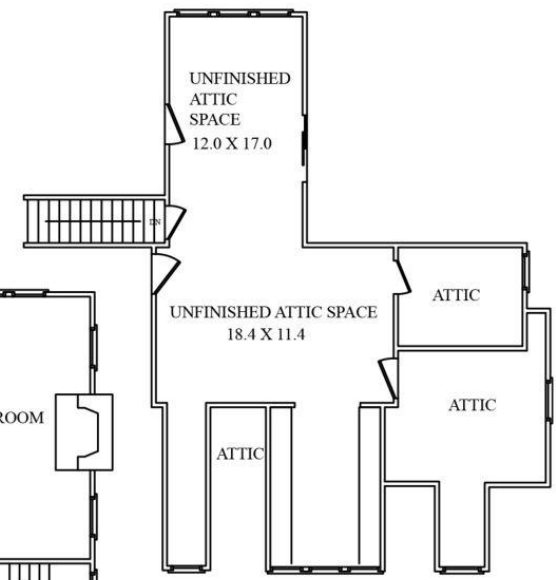
THE FLOORPLAN



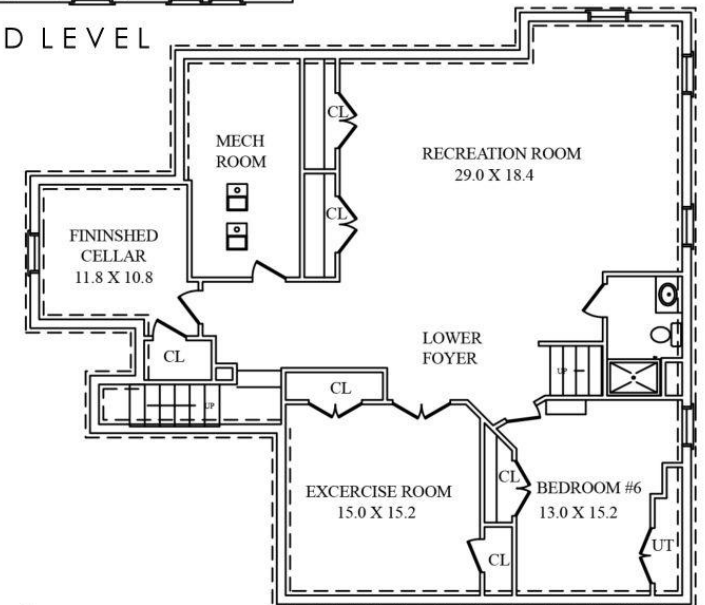
FIRST LEVEL



SECOND LEVEL



THIRD LEVEL



LOWER LEVEL

NOT TO SCALE - This floor plan is provided for illustration purposes only.
Room positions and dimensions are approximate and should be independently measured for accuracy



CELL: 973.936.9129
OFFICE: 973.376.0033 x101
info@sueadler.com
sueadler.com/26sceneryhill

