

74 Tall Oaks Drive

New Providence, New Jersey



Sue Adler
KELLER WILLIAMS
PREMIER PROPERTIES

sueadler 
THE #1 KELLER WILLIAMS TEAM IN NEW JERSEY team

Each Keller Williams office is independently owned and operated.



Drive up to a new, idyllic world where this tall property proudly overlooks its domain and is waiting to be called home. Nestled on a picturesque suburban street, this double story structure has an abundance of appeal and many unique additions.

As you enter the large Foyer and are flooded with light coming in through the big windows, you'll feel a sense of relief as you put your outerwear in the coat closet and settle in for the day. Step over painted hardwood floors into the Living Room, where you can relax in front of the wood burning fireplace, lie on the couch and stare up at the ornamental details of the ceiling, or organize your books and belongings in the built-in bookcases and cabinets. On the first floor you'll also find a Kitchen featuring granite countertops, stainless steel, KitchenAid appliances, a built-in microwave, white cabinets, and pantry for storage. It also boasts a stylish "hole-in-the-wall" window overlooking the dining area, allowing you to converse with guests as you prepare the next course, or keep an eye on the children while they're eating a meal!

Continue to the Dining Room over hardwood floors and you'll find two built-in china cabinets, and white wainscoting to match the white and glass doors leading out to the bluestone patio. This paved area is large enough for an outdoor dining set and is back-dropped by a tailored yard, which provides a fenced off recreational area. Let the dog run around, or set up a children's playground. Additionally, the first floor features an Office that doubles as Bedroom #4 with built-in cabinets and sliding glass doors that also lead out to the Backyard. Whenever you need to take a study or work break, or simply need some fresh air, step outside where you can enjoy lunch on your patio or take in the tranquil ambience.





Head upstairs to the second floor where you'll find two bedrooms, each with hardwood floors, a closet and ceiling fan. In the Hallway, a Bathroom services these two rooms, with a pedestal sink and bathtub/shower combination. Finally the Master Bedroom is suitably located on the same floor and gives you easy access to the other bedrooms, making it the ideal layout for keeping young children nearby. The Master Bedroom comes with an always-appreciated walk-in-closet and a Master Bath with tile floors and a stand up shower, as well as a large vanity with a generous amount of cabinets. Head back downstairs, past the first floor, and walk down a carpeted stairwell to the Finished Basement with high ceilings, parquet flooring, a Laundry Room, a family room, half bathroom and access to the attached one car Garage. The Basement is perfectly designed for setting up an entertainment center that's closed off from the rest of the house!

Located on the scenic Passaic River, New Providence is only a 40 minute train ride away from New York City. Close to the bustling downtown area of Summit, with an array of restaurants and boutique shops, this home is ready to be cherished.

Inside and Out...

First Level

- Large foyer with big windows, painted hardwood floors, and coat closet
- Dining room with white wainscoting, built in china cabinet with granite cabinet tops, extra china cabinet built into corner, and hardwood floors
- Kitchen with granite countertops, stainless steel KitchenAid appliances, built-in microwave, white cabinets, hardwood floors, and pantry for storage
- Living room with wood burning fireplace, wood mantle, detailed ceilings, built in bookcases and cabinets
- Bathroom with pedestal sink, tile floors, and tile bathtub/shower combination
- Office/Bedroom #4 with sliding glass doors to backyard bluestone patio, built in cabinets, and a built-in bookshelf

Second Level

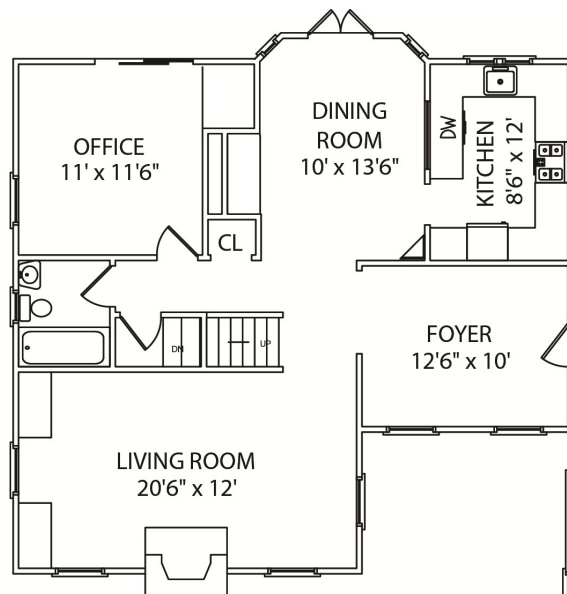
- Master Bedroom with walk in closet master bath with tile floors stand-up shower with tile, large vanity with lots of cabinets and moveable shower head
- Bedroom #2 with hardwood floors, closet, ceiling fan
- Bedroom #3 with hardwood floors, ceiling fan, closet
- Hallway bathroom with pedestal sink, bathtub/shower combo
- Hallway linen closet

Lower Level

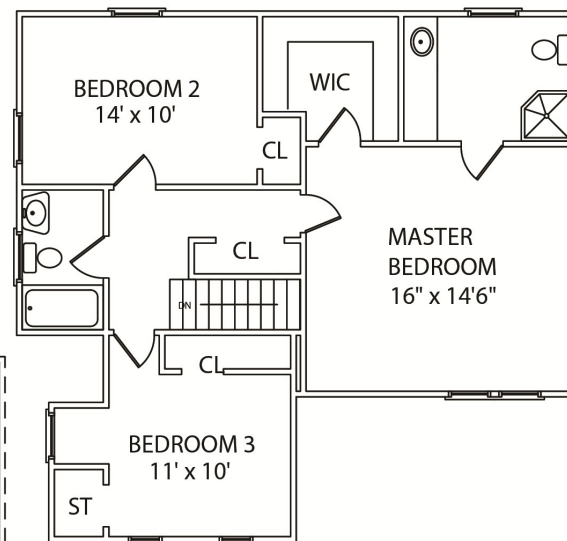
- Finished basement with large tile floors, high ceilings, parquet flooring, carpeted stairs, laundry room, and access to attached one car garage
- Half bathroom with pedestal sink, tile floors and storage shelves

Updates and Additional Features

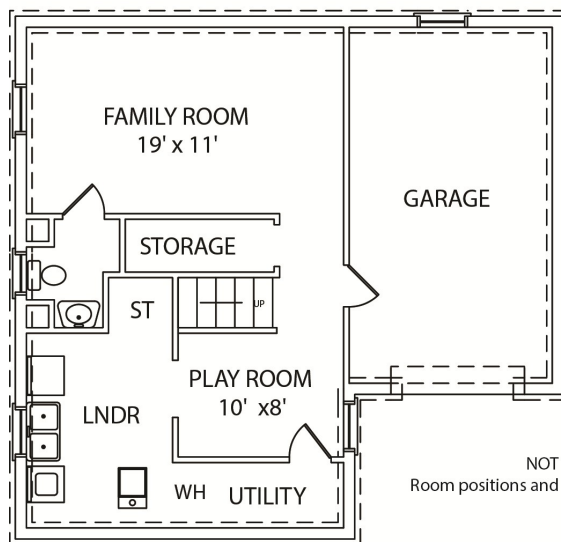
- Fenced-In Backyard
- Large Bluestone Patio in Backyard
- Security System
- Central HVAC



FIRST FLOOR



SECOND FLOOR



LOWER LEVEL

NOT TO SCALE - This floor plan is provided for illustration purposes only. Room positions and dimensions are approximate and should be independently measured for accuracy.

Sue Adler
KELLER WILLIAMS
PREMIER PROPERTIES



Cell: (973) 464-9129
Office: (973) 376-0033 x101
Sue@sueadler.com
www.sueadler.com/74TallOaks

sueadler 
THE #1 KELLER WILLIAMS TEAM IN NEW JERSEY team