



# 11 Mountain Avenue

Maplewood, New Jersey

*Sue Adler*  
**KELLER WILLIAMS**  
PREMIER PROPERTIES

**sueadler**   
THE #1 KELLER WILLIAMS TEAM IN NEW JERSEY team

Each Keller Williams office is independently owned and operated.





11 Mountain Avenue is a commuter's dream and a family's paradise. Just a few short blocks from the NJ Transit Train Station and blocks from fine shops, parks, and restaurants, everything you need is right at your feet. In addition to being right next to all the amenities Maplewood has to offer, this home sits on a quiet, peaceful street, perfect for adults and kids alike. Built in 1915, 11 Mountain Avenue matches historic beauty with modern amenities. This stunning home welcomes you with a large, recently renovated front porch, ideal for sipping lemonade on a hot summer's day. You can revel in the home's professionally landscaped front and backyard while entertaining guests or just reading a novel after a hard day's work.

When you enter the Foyer, the first features you'll notice are the home's elegant staircase, pristine hardwood floors, sweeping-high ceilings, and the flood of natural light that envelops the entire house. To your right is the Formal Dining Room with a beautiful bay window and charming window seat. To your left is a large Formal Living Room, which features lovely and functional built-in bookcases framing the handsome wood-burning fireplace. You can serve nightly family dinner in your new Eat-In Kitchen, which has a breakfast bench ready to go. The glamorous kitchen – completely renovated in 2010 – is ideal for both simple meals and preparing grand celebrations. With stainless steel appliances, ample granite counter space, and an extra-deep stainless steel sink, you'll have everything you need right at your fingertips. From the Kitchen, you'll also get to look out on the home's perfect backyard. With lush, green grass, mature plants and trees, and an elegant stone patio, the backyard can be your quiet oasis or the go-to spot for family get-togethers. Back inside, keep all the kids' playthings downstairs in the Finished Basement, which has a large recreation room and wall-to-wall carpeting. Additionally, the Basement includes a spacious laundry room with extra storage.





From the First Level, walk up the grand staircase to Second Floor. You'll notice the first three of four bedrooms, along with a Hallway Bathroom and linen closet. The Hall Bath is large, with a convenient shower over tub and extra storage for every toiletry imaginable. The first two Bedrooms have well-maintained hardwood floors, large sunny windows, and spacious closets with shelving. The real treat is this home's Master Bedroom. Open the classic double doors to a huge space with enough room for a sitting area and king sized bed. Let the Master Bedroom be your ultimate retreat from it all. You'll have a large walk-in closet, with ample room for all your accessories and, of course, a fine en-suite Master Bathroom. The Master Bathroom includes a stand-up shower and an additional linen/storage closet. The Third Floor is home to the 4<sup>th</sup> bedroom but is completely versatile and can be used for anything you may need – a guest suite, office, library – the possibilities are endless. It's private, with ample closet space and access to attic storage.

From top to bottom, this stunning house is a wonderful mix of classic architecture and contemporary amenities. Within a few short blocks to fabulous shopping and restaurants as well as public transportation into nearby Manhattan, 11 Mountain Avenue is a wonderful place to call home.



# Inside and Out...

## First Level

- Foyer with hardwood stairs and grand staircase
- Living Room with hardwood floors, large windows, crown molding, and built-in bookcases surrounding the wood-burning fireplace with brick mantle
- Dining Room with hardwood floors, large bay window with window seat, crown molding, baseboard molding, and modern chandelier
- Eat-In kitchen with hardwood floors, breakfast bench, recessed lighting, granite countertops, white cabinets, stainless steel appliances (LG refrigerator/freezer, JennAir dishwasher, and LG built-in microwave), backsplash with subway tile, and deep stainless steel sink
- Mudroom off Kitchen with shelves, hooks, and coat closet
- Powder Room with pedestal sink, hardwood floors, and mirror

## Second Level

- Bedroom #2 with hardwood floors, large closet with shelving, large windows with custom blinds, and baseboard molding
- Bedroom #3 with hardwood floors, large closet with shelving, large windows with custom blinds, and baseboard molding
- Hallway Linen Closet with shelves and drawers
- Hallway Bathroom with shower over tub combination, tiled walls, extra linen closet, pedestal sink, and tile floors
- Master Bedroom with handsome double doors, hardwood floors, large windows with custom blinds, walk-in closet with shelving, and en-suite bathroom
- Master Bathroom with tiled stand-up shower, waterfall shower head, and extra linen/storage closet

## Third Level

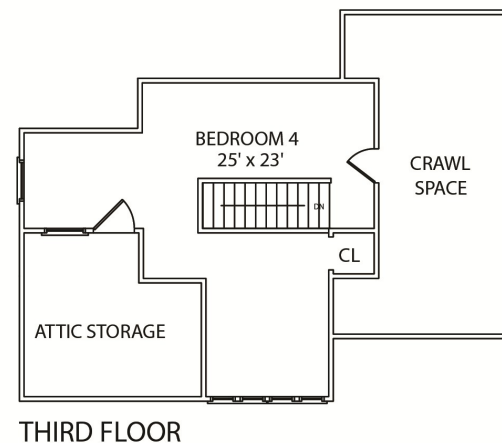
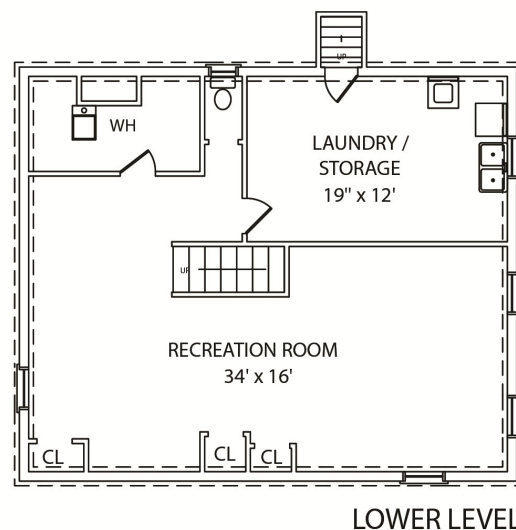
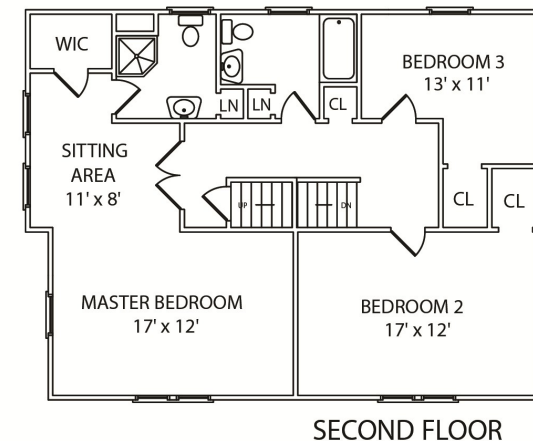
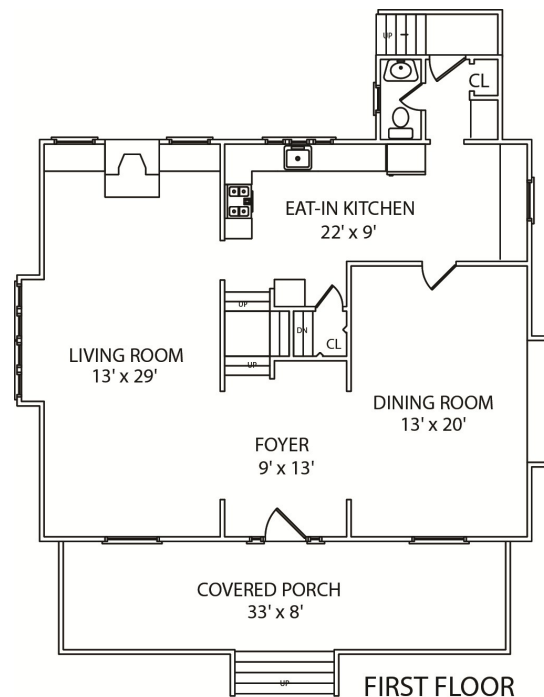
- Bedroom #4 with hardwood floors, skylight, closet, and attic storage space

## Lower Level

- Finished Basement with Recreation Room with wall-to-wall carpeting, recessed lighting, storage area, and laundry room with sink

## Updates and Additional Features

- Driveway with Belgium block (2014)
- Renovated Front Porch (2013)
- Hydraulic back up sump pump (2013)
- Air conditioning unit (2013)
- Chimney Repair (2011)
- Kitchen (2010)
- Stone Patio in Backyard (2006)
- Professional Landscaping
- Inlaid hardwood floors
- In ground sprinkler



NOT TO SCALE - This floor plan is provided for illustration purposes only.  
Room positions and dimensions are approximate and should be independently measured for accuracy.



Cell: (973) 464-9129  
Office: (973) 376-0033 x101  
Sue@sueadler.com  
www.sueadler.com/11Mountain

