

11 Princeton Road

Livingston, New Jersey



Sue Adler
KELLER WILLIAMS
PREMIER PROPERTIES

sueadler 
THE #1 KELLER WILLIAMS TEAM IN NEW JERSEY team

Each Keller Williams office is independently owned and operated.



In the lovely Chestnut Hill Section of Livingston sits a very special home. A sweeping driveway leads to a two-car garage, a multilevel backyard, and patio defined by a sculptural stone retaining wall. It has been lovingly landscaped with built-in planters, specimen trees and bushes, a terraced front garden and landscape lighting. The decorative rubble stone stairs with slate treads leads you to the impressive double entry doors graced with Palladium Windows. The elegant two-story entry foyer is drenched in sunlight from several directions and the blond hardwood floors glow in response. This is also home to the Dining Area, which is architecturally defined by four Doric Columns. The foyer contains two generous coat closets, and entrance to the library/office with magnificent built-in cabinetry, bookcases and desk. The foyer also provides wide views straight ahead into the family room, with its back wall of windows and French Doors showcasing the rear yard and patio, the living room, and staircase to the bedroom level.

Off to the right is the eat-in kitchen, boasting storage galore, a small built-in desk where you can pay bills or read recipes, a SubZero refrigerator, 6 burner professional oven, double sink, separate wine fridge, separate stacked double oven, ceramic tile floor, tumbled marble backsplash, granite countertops and recessed lighting. Past the kitchen, the Family Room is grandly spacious, featuring high ceilings, with beautiful views of the patio and back yard. The gorgeous cherrywood built-in entertainment center adds architectural interest, a cozy warmth and will house all of your electronics. It is positioned for maximum viewing from any area of the room; large enough for multiple seating areas. A wood burning fireplace with brick surround and powder room leave no comfort stone unturned on the first level. For quiet reflection, conversation, reading or listening to music, (the home has a built in sound system with speakers in each room) the Living Room is the perfect retreat.



The carpeted stairs take you softly and quietly to the four bedrooms on the second floor. To the right of the second floor landing is a full bath, which serves two of the bedrooms. The other two bedrooms, including the Master Suite, have full en suite baths. There is an abundance of built-ins and closet space in each room making it virtually clutter resistant!

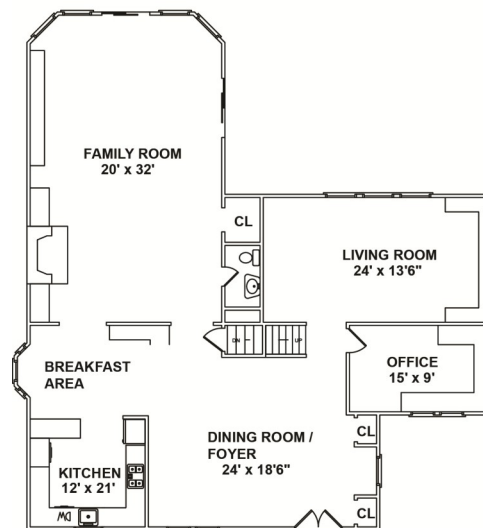
And there's more! The lower level is beautifully done with versatility limited only by your imagination. Perfect as a home theater, family room, play room, or living room for guests, the lower level is comfortable, quiet and has plush new creamy wall-to-wall carpet, built-in cabinetry and a desk for added storage and functionality. A large laundry room is outfitted with everything you need. Down the hall is a sunken home gym behind French doors and is also completely versatile, generously proportioned and offers a double closet and mirrored wall. Adjacent to the gym you will find the 5th bedroom, as well as a full bathroom. Define this lower level any way that works for you: an in-law suite, a nanny suite, a "kids home from college" suite.

With top notch schools, great shopping and restaurants and easy access to NY transportation, 11 Princeton Road is the perfect place to call home!

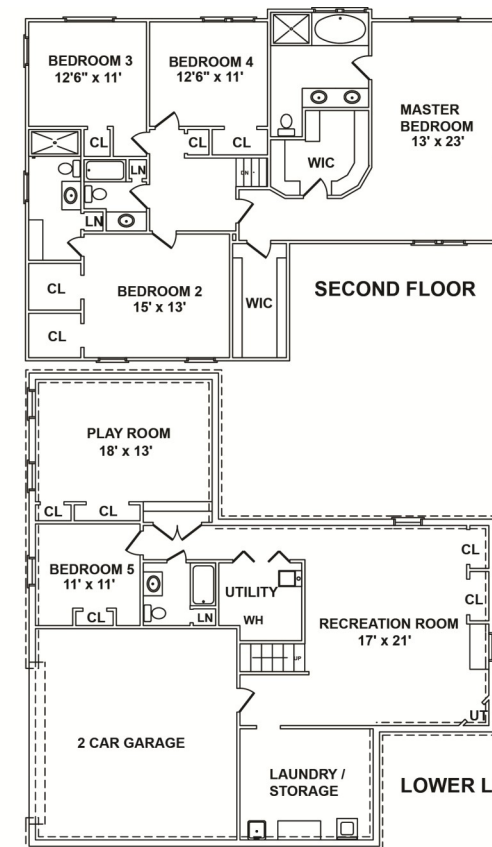
Inside and Out...

First Level

- Entry Foyer/Dining Area with two story height, Chandelier in front of Palladian Window, Blond hardwood floors throughout, 4 Doric columns defining the formal dining area, two coat closets, picture window and access to lower level, office, living room and kitchen
- Kitchen with recessed lighting, cream colored ceramic tile floors with decorative border, warm honey colored wood cabinetry, dark granite countertops, 6 burner oven, SubZero Refrigerator, separate stacked double oven, built-in sound speakers, stainless steel dishwasher, tumbled marble backsplash with decorative mosaic tiles, stainless steel vent hood, double sink, window over sink, breakfast area and built in desk
- Living Room with recessed lighting, hardwood floors, bay picture window and built in sound system
- Family Room with recessed lighting, hardwood floors, skylights, half brick wall housing wood burning fireplace with brass screen, back wall of windows and French Doors, built-in cherrywood entertainment center and built in sound system
- Powder Room with tile floor, mirror, pedestal sink and recessed lighting
- Office/Library with mahogany stained built ins, desks, cabinets and window



FIRST FLOOR



LOWER LEVEL

NOT TO SCALE- This floor plan is provided for illustration purposes only.
Room positions and dimensions are approximate and should be independently measured for accuracy

Second Level

- Master Bedroom with curved wall entrance, built in bookcase, recessed lighting, carpet, 2 large walk in closets and Master en suite bath with recessed lighting, white ceramic tile floor, white tile walls with black and white decorative border, glass shower stall, Jacuzzi tub, double sink with granite top over wood vanity and mirrored wall over sink
- Bedroom #2 with recessed lighting, carpet, built in book shelves and desk, two walk in closets and two windows with en suite bath featuring blue and white tile floor, white tiled walls with blue border, built in mirrored medicine cabinet, stall shower with glass doors and vanity sink with storage cabinet
- Bedroom #3 with carpet, recessed lighting and large closet
- Bedroom #4 with hardwood floors, recessed lighting, double mirror front closet and built in bookshelf
- Hall Bath with white tile walls, decorate borders, peach and white tile floors, white wood vanity with marble top and shower over tub

Lower Level

- Bedroom #5 with carpet, recessed lighting, window and large closet
- Rec room with carpet, recessed lighting, built in desk and storage area and double closet
- Exercise Room sunken with carpet, recessed lighting, mirrored wall and double closet
- Bathroom with recessed lighting, ceramic tile floor, mirror over sink, shower over tub and sink
- Laundry room with washer, dryer, refrigerator and cabinets
- Utility room

Additional Features

- Dual Zone Central Heat and A/C
- Paved rear patio
- In ground sprinkler system
- Security system
- Professional landscaping
- 2 Hot water heaters
- 2 sump pumps



Cell: (973) 975-0197
Office: (973) 376-0033 x101
Sue@sueadler.com
www.sueadler.com/11Princeton